

Recombinant Human ITGAX protein, His-tagged

Cat. No. ITGAX-183H **Lot. No.** (See product label)

SPECIFICATION

Product Overview	Recombinant Human ITGAX protein(NP_000878)(21-352 aa), fused with His tag, was expressed in E. coli.
Species	Human
Source	E.coli
ProteinLength	21-352 aa
Form	The purified protein was Lyophilized from sterile PBS (58mM Na ₂ HPO ₄ ,17mM NaH ₂ PO ₄ , 68mM NaCl, pH7.). 5 % trehalose and 5 % mannitol are added as protectants before lyophilization.
AA Sequence	NLDTEELTAFRVDSAGFGDSVVQYANSWVVVGAPQKITAANQTGGLYQCGYSTGA CEPIGLQVPPEAVNMSLGLSLASTTSPSQLLACGPTVHHECGRNMYLTGLCFLLGPT QLTQRLPVSQRQECPRQEQDIVFLIDGSGSISSRNFATMMNFVRAVISQFQRPSTQFS LMQFSNKFQTHFTFEEFRSSNPLSLLASVHQLQGFTYTATAIQNVVHRLFHASYGA RRDAAKILIVITDGKKEGDSLKYKDVIPMADAAGIIRYAIGVGLAFQNRNSWKELNDIA SKPSQEHIFKVEDFDALKDIQNQLKEKIFAIEGTETTSSSSFELEMA
Purity	90%, by SDS-PAGE with Coomassie Brilliant Blue staining.
Storage	Short-term storage: Store at 2-8°C for (1-2 weeks). Long-term storage: Aliquot and store at -20°C to -80°C for up to 3 months, buffer containing 50% glycerol is recommended for reconstitution. Avoid repeat freeze-thaw

 Tel: 1-631-559-9269 1-516-512-3133

 Email: info@creative-biomart.com  Fax: 1-631-938-8127

 45-1 Ramsey Road, Shirley, NY 11967, USA

cycles.

Reconstitution

Reconstitute at 0.25 g/μl in 200 μl sterile water for short-term storage.
 Reconstitution with 200 μl 50% glycerol solution is recommended for longer term storage.

GENE INFORMATION

Gene Name

ITGAX integrin, alpha X (complement component 3 receptor 4 subunit) [Homo sapiens]

Official Symbol

ITGAX

Synonyms

ITGAX; integrin, alpha X (complement component 3 receptor 4 subunit); CD11C, integrin, alpha X (antigen CD11C (p150), alpha polypeptide); integrin alpha-X; CD11c; leu M5, alpha subunit; p150 95 integrin alpha chain; CD11 antigen-like family member C; leukocyte adhesion receptor p150,95; myeloid membrane antigen, alpha subunit; leukocyte surface antigen p150,95, alpha subunit; leukocyte adhesion glycoprotein p150,95 alpha chain; integrin, alpha X (antigen CD11C (p150), alpha polypeptide); CD11C; SLEB6;

Gene ID

3687

mRNA Refseq

NM_000887

Protein Refseq

NP_000878

MIM

151510

UniProt ID

P20702

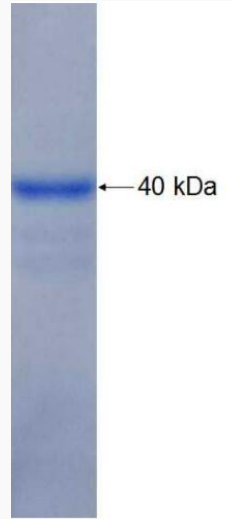
 Tel: 1-631-559-9269 1-516-512-3133

 Email: info@creative-biomart.com  Fax: 1-631-938-8127

 45-1 Ramsey Road, Shirley, NY 11967, USA



SDS-PAGE



Tel: 1-631-559-9269 1-516-512-3133

Email: info@creative-biomart.com Fax: 1-631-938-8127

45-1 Ramsey Road, Shirley, NY 11967, USA