

Recombinant Human ITGAX Protein (Met1-Pro1107), C-His tagged

Cat. No. ITGAX-4324H **Lot. No.** (See product label)

SPECIFICATION

Product Overview	Recombinant human ITGAX (Met1-Pro1107) fused with the C-terminal His tag was expressed in Mammalian cells.
Species	Human
Source	Mammalian Cells
ProteinLength	Met1-Pro1107
Form	Lyophilized powder/frozen liquid
Molecular Mass	121.99 kDa
Endotoxin	< 1.0 EU/μg of the protein as determined by the LAL method.
Purity	>90% as determined by SDS-PAGE.
Notes	For research use only.
Storage	Use a manual defrost freezer and avoid repeated freeze thaw cycles. Store at 2 to 8 centigrade for one week. Store at -20 to -80 centigrade for twelve months from the date of receipt.
Storage Buffer	Supplied as solution form in PBS or lyophilized from PBS.

 Tel: 1-631-559-9269 1-516-512-3133

 Email: info@creative-biomart.com  Fax: 1-631-938-8127

 45-1 Ramsey Road, Shirley, NY 11967, USA

Reconstitution Reconstitute in sterile water for a stock solution.

Shipping They are shipped out with dry ice/blue ice unless customers require otherwise.

GENE INFORMATION

Gene Name ITGAX integrin, alpha X (complement component 3 receptor 4 subunit) [Homo sapiens (human)]

Official Symbol ITGAX

Synonyms ITGAX; integrin, alpha X (complement component 3 receptor 4 subunit); CD11C, integrin, alpha X (antigen CD11C (p150), alpha polypeptide); integrin alpha-X; CD11c; leu M5, alpha subunit; p150 95 integrin alpha chain; CD11 antigen-like family member C; leukocyte adhesion receptor p150,95; myeloid membrane antigen, alpha subunit; leukocyte surface antigen p150,95, alpha subunit; leukocyte adhesion glycoprotein p150,95 alpha chain; integrin, alpha X (antigen CD11C (p150), alpha polypeptide); CD11C; SLEB6;

Gene ID 3687

mRNA Refseq NM_000887

Protein Refseq NP_000878

MIM 151510

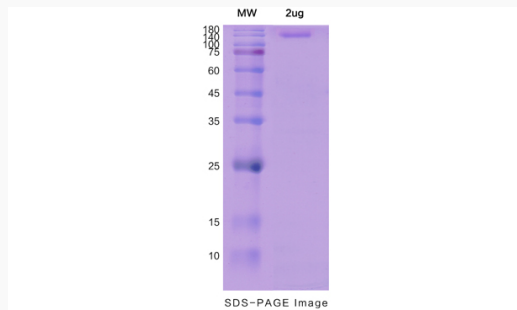
UniProt ID P20702

 Tel: 1-631-559-9269 1-516-512-3133

 Email: info@creative-biomart.com  Fax: 1-631-938-8127

 45-1 Ramsey Road, Shirley, NY 11967, USA

SDS-PAGE



 Tel: 1-631-559-9269 1-516-512-3133

 Email: info@creative-biomart.com  Fax: 1-631-938-8127

 45-1 Ramsey Road, Shirley, NY 11967, USA