

## Recombinant Human ITGAX Protein, GST-tagged

Cat. No. ITGAX-4987H Lot. No. (See product label)

### SPECIFICATION

<b>Product Overview</b>	Human ITGAX partial ORF ( NP_000878, 114 a.a. - 223 a.a.) recombinant protein with GST-tag at N-terminal.
<b>Species</b>	Human
<b>Source</b>	Wheat Germ
<b>Description</b>	This gene encodes the integrin alpha X chain protein. Integrins are heterodimeric integral membrane proteins composed of an alpha chain and a beta chain. This protein combines with the beta 2 chain (ITGB2) to form a leukocyte-specific integrin referred to as inactivated-C3b (iC3b) receptor 4 (CR4). The alpha X beta 2 complex seems to overlap the properties of the alpha M beta 2 integrin in the adherence of neutrophils and monocytes to stimulated endothelium cells, and in the phagocytosis of complement coated particles. [provided by RefSeq]
<b>Molecular Mass</b>	37.84 kDa
<b>AA Sequence</b>	HECGRNMYLTGLCFLLGPTQLTQRLPVSQRQECPRQEQDIVFLIDGSGSISSRNFATM MNFVRAVISQFQRPSTQFSLMQFSNKFQTHFTFEEFRRSSNPLSLLASVHQLQ
<b>Applications</b>	Enzyme-linked Immunoabsorbent Assay Western Blot (Recombinant protein) Antibody Production Protein Array

 Tel: 1-631-559-9269 1-516-512-3133

 Email: [info@creative-biomart.com](mailto:info@creative-biomart.com)  Fax: 1-631-938-8127

 45-1 Ramsey Road, Shirley, NY 11967, USA

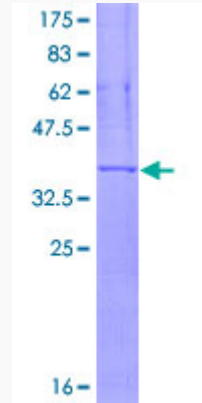
<b>Notes</b>	Best use within three months from the date of receipt of this protein.
<b>Storage</b>	Store at -80 centigrade. Aliquot to avoid repeated freezing and thawing.
<b>Storage Buffer</b>	50 mM Tris-HCl, 10 mM reduced Glutathione, pH=8.0 in the elution buffer.
<b>GENE INFORMATION</b>	
<b>Gene Name</b>	ITGAX integrin, alpha X (complement component 3 receptor 4 subunit) [ Homo sapiens ]
<b>Official Symbol</b>	ITGAX
<b>Synonyms</b>	ITGAX; integrin, alpha X (complement component 3 receptor 4 subunit); CD11C, integrin, alpha X (antigen CD11C (p150), alpha polypeptide); integrin alpha-X; CD11c; leu M5, alpha subunit; p150 95 integrin alpha chain; CD11 antigen-like family member C; leukocyte adhesion receptor p150,95; myeloid membrane antigen, alpha subunit; leukocyte surface antigen p150,95, alpha subunit; leukocyte adhesion glycoprotein p150,95 alpha chain; integrin, alpha X (antigen CD11C (p150), alpha polypeptide); CD11C; SLEB6;
<b>Gene ID</b>	3687
<b>mRNA Refseq</b>	NM_000887
<b>Protein Refseq</b>	NP_000878
<b>MIM</b>	151510
<b>UniProt ID</b>	P20702

 Tel: 1-631-559-9269 1-516-512-3133

 Email: [info@creative-biomart.com](mailto:info@creative-biomart.com)  Fax: 1-631-938-8127

 45-1 Ramsey Road, Shirley, NY 11967, USA

**Quality Control  
Testing**



12.5% SDS-PAGE Stained with Coomassie Blue

 Tel: 1-631-559-9269 1-516-512-3133

 Email: [info@creative-biomart.com](mailto:info@creative-biomart.com)  Fax: 1-631-938-8127

 45-1 Ramsey Road, Shirley, NY 11967, USA