

Recombinant Human ITGB1 Protein, His-tagged

Cat. No. ITGB1-233H Lot. No. (See product label)

SPECIFICATION

Product Overview	Recombinant Human ITGB1 Protein(CAA30790.1)(Met1-Asp728) was expressed in HEK293 with a polyhistidine tag at the C-terminus.
Species	Human
Source	HEK293
ProteinLength	1-728 aa
Form	Lyophilized from sterile PBS, pH 7.4.
Molecular Mass	The recombinant human ITGB1 consists 749 amino acids and predicts a molecular mass of 83.3 kDa.
Endotoxin	< 1.0 EU per µg protein as determined by the LAL method.
Purity	> 90 % as determined by SDS-PAGE
Storage	Store it under sterile conditions at -20°C to -80°C upon receiving. Recommend to aliquot the protein into smaller quantities for optimal storage. Avoid repeated freeze-thaw cycles.
Reconstitution	It is recommended that sterile water be added to the vial to prepare a stock solution of 0.2 ug/ul. Centrifuge the vial at 4°C before opening to recover the entire contents.

 Tel: 1-631-559-9269 1-516-512-3133

 Email: info@creative-biomart.com  Fax: 1-631-938-8127

 45-1 Ramsey Road, Shirley, NY 11967, USA

GENE INFORMATION

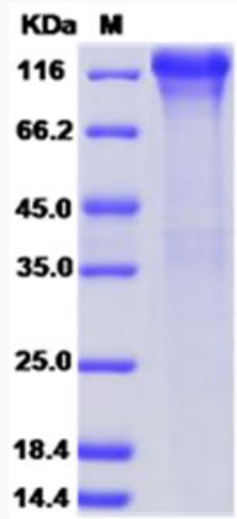
Gene Name	ITGB1 integrin, beta 1 (fibronectin receptor, beta polypeptide, antigen CD29 includes MDF2, MSK12) [Homo sapiens]
Official Symbol	ITGB1
Synonyms	ITGB1; integrin, beta 1 (fibronectin receptor, beta polypeptide, antigen CD29 includes MDF2, MSK12); FNRB, MDF2, MSK12; integrin beta-1; CD29; GPIIA; integrin VLA-4 beta subunit; very late activation protein, beta polypeptide; FNRB; MDF2; VLAB; MSK12; VLA-BETA;
Gene ID	3688
mRNA Refseq	NM_002211
Protein Refseq	NP_002202
MIM	135630
UniProt ID	P05556

 Tel: 1-631-559-9269 1-516-512-3133

 Email: info@creative-biomart.com  Fax: 1-631-938-8127

 45-1 Ramsey Road, Shirley, NY 11967, USA

SDS-PAGE



 Tel: 1-631-559-9269 1-516-512-3133

 Email: info@creative-biomart.com  Fax: 1-631-938-8127

 45-1 Ramsey Road, Shirley, NY 11967, USA