

Recombinant Human ITGB1 Protein (Met1-Asp728), C-His tagged

Cat. No. ITGB1-4325H **Lot. No.** (See product label)

SPECIFICATION

Product Overview	Recombinant human ITGB1 (Met 1-Asp728) fused with the C-terminal His tag was expressed in Mammalian cells.
Species	Human
Source	Mammalian Cells
ProteinLength	Met1-Asp728
Form	Lyophilized powder/frozen liquid
Molecular Mass	83.3 kDa
Endotoxin	< 1.0 EU/μg of the protein as determined by the LAL method.
Purity	>90% as determined by SDS-PAGE.
Notes	For research use only.
Storage	Use a manual defrost freezer and avoid repeated freeze thaw cycles. Store at 2 to 8 centigrade for one week. Store at -20 to -80 centigrade for twelve months from the date of receipt.
Storage Buffer	Supplied as solution form in PBS or lyophilized from PBS.

 Tel: 1-631-559-9269 1-516-512-3133

 Email: info@creative-biomart.com  Fax: 1-631-938-8127

 45-1 Ramsey Road, Shirley, NY 11967, USA

Reconstitution Reconstitute in sterile water for a stock solution.

Shipping They are shipped out with dry ice/blue ice unless customers require otherwise.

GENE INFORMATION

Gene Name ITGB1 integrin, beta 1 (fibronectin receptor, beta polypeptide, antigen CD29 includes MDF2, MSK12) [Homo sapiens (human)]

Official Symbol ITGB1

Synonyms ITGB1; integrin, beta 1 (fibronectin receptor, beta polypeptide, antigen CD29 includes MDF2, MSK12); FNRB, MDF2, MSK12; integrin beta-1; CD29; GPIIA; integrin VLA-4 beta subunit; very late activation protein, beta polypeptide; FNRB; MDF2; VLAB; MSK12; VLA-BETA;

Gene ID 3688

mRNA Refseq NM_002211

Protein Refseq NP_002202

MIM 135630

UniProt ID P05556

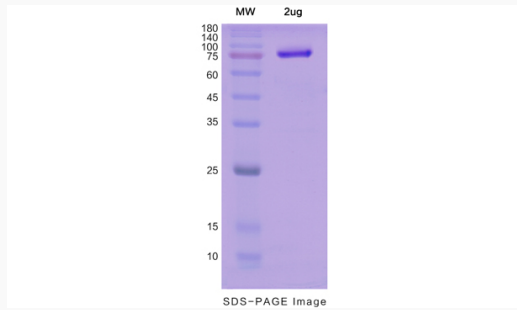
 Tel: 1-631-559-9269 1-516-512-3133

 Email: info@creative-biomart.com  Fax: 1-631-938-8127

 45-1 Ramsey Road, Shirley, NY 11967, USA



SDS-PAGE



Tel: 1-631-559-9269 1-516-512-3133

Email: info@creative-biomart.com Fax: 1-631-938-8127

45-1 Ramsey Road, Shirley, NY 11967, USA