

Recombinant Human ITGB1 Protein, Myc/DDK-tagged, C13 and N15-labeled

Cat. No. ITGB1-4594H **Lot. No.** (See product label)

SPECIFICATION

| | |
|-------------------------|--|
| Product Overview | ITGB1 MS Standard C13 and N15-labeled recombinant protein (NP_596867) with a C-terminal MYC/DDK tag, was expressed in HEK293 cells. |
| Species | Human |
| Source | HEK293 |
| Description | Integrins are heterodimeric proteins made up of alpha and beta subunits. At least 18 alpha and 8 beta subunits have been described in mammals. Integrin family members are membrane receptors involved in cell adhesion and recognition in a variety of processes including embryogenesis, hemostasis, tissue repair, immune response and metastatic diffusion of tumor cells. This gene encodes a beta subunit. Multiple alternatively spliced transcript variants which encode different protein isoforms have been found for this gene. |
| Molecular Mass | 88.4 kDa |
| AA Sequence | MNLQPIFWIGLISSVCCVFAQTDENRCLKANAKSCGECIQAGPNCGWCTNSTFLQE GMPTSARCDDLEALKKKGCPPDDIENPRGSKDIKKNKNVTNRSKGTAEKLPEDITQ IQPQQLVLRRLRSGEPQTFTLKFKAEDYPIDLYYLMDSL SYSMKDDL ENVKSLGTDLM NEMRRITSDFRIGFGSFVEKTVMPYISTTPAKLRNPCTSEQNCTSPFSYKNVLSLTNK GEVFNELVGKQRISGNLDSPEGGFD AIMQVAVCGSLIGWRNVTRLLVFSTDAGFHF AGDGKLG GIVLPNDGQCHLENNMYTMSHYDYPSIAHLVQKLS ENNIQTIFAVTEEF |

 Tel: 1-631-559-9269 1-516-512-3133

 Email: info@creative-biomart.com  Fax: 1-631-938-8127

 45-1 Ramsey Road, Shirley, NY 11967, USA

QPVYKELKNLIPKSAVGTLSANSSNVIQLIIDAYNSLSSEVILENGKLSEGVTISYKSYC
 KNGVNGTGENGRCNSNISIGDEVQFEISITSNKCPKKDSDFSFKIRPLGFTEEVEVILQY
 ICECECQSEGIPEPKCHEGNGTFECGACRCNEGRVGRHCECSTDEVNSEDMDAY
 CRKENSSEICSNNGECVCGQCVCRCRKRDNNTNEIYSGKFCECDNFNCDRSNGLICGG
 NGVCKCRVCECNPNYTGSACDCSLDTSTCEASNGQICNNGRGICECGVCKCTDPKF
 QGQTCEMCQTCLGVCAEHKECVQCRAFNGKGEKKDTCTQECSYFNITKVESRDKLP
 QPVQPDPVSHCKEKDVDDCWFYFTYSVNGNNEVMVHVVENPECPTGPDIIPIVAGV
 VAGIVLIGLALLLIWKLLMIHHRREFAKFEKEKMNAKWDTGENPIYKSAVTTVVNPKY
 EGKTRTRPLEQKLISEEDLAANDILDYKDDDDKV

Purity > 80% as determined by SDS-PAGE and Coomassie blue staining

Stability Stable for 3 months from receipt of products under proper storage and handling conditions.

Storage Store at -80 centigrade. Avoid repeated freeze-thaw cycles.

Concentration 50 µg/mL as determined by BCA

Storage Buffer 100 mM glycine, 25 mM Tris-HCl, pH 7.3.

GENE INFORMATION

Gene Name [ITGB1 integrin subunit beta 1 \[Homo sapiens \(human\) \]](#)

Official Symbol [ITGB1](#)

Synonyms

ITGB1; integrin, beta 1 (fibronectin receptor, beta polypeptide, antigen CD29 includes MDF2, MSK12); FNRB, MDF2, MSK12; integrin beta-1; CD29; GPIIA; integrin VLA-4 beta subunit; very late activation protein, beta polypeptide; FNRB; MDF2; VLAB; MSK12; VLA-BETA;

 Tel: 1-631-559-9269 1-516-512-3133

 Email: info@creative-biomart.com  Fax: 1-631-938-8127

 45-1 Ramsey Road, Shirley, NY 11967, USA

Gene ID 3688

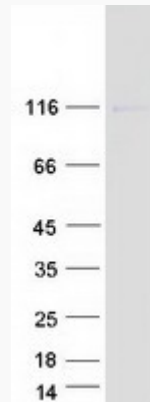
mRNA Refseq NM_133376

Protein Refseq NP_596867

MIM 135630

UniProt ID P05556

SDS-PAGE



 Tel: 1-631-559-9269 1-516-512-3133

 Email: info@creative-biomart.com  Fax: 1-631-938-8127

 45-1 Ramsey Road, Shirley, NY 11967, USA