

## Recombinant Human ITGB1 Protein, GST-tagged

**Cat. No.** ITGB1-4986H    **Lot. No.** (See product label)

### SPECIFICATION

<b>Product Overview</b>	Human ITGB1 full-length ORF ( AAH20057.1, 1 a.a. - 798 a.a.) recombinant protein with GST-tag at N-terminal.
<b>Species</b>	Human
<b>Source</b>	Wheat Germ
<b>Description</b>	Integrins are heterodimeric proteins made up of alpha and beta subunits. At least 18 alpha and 8 beta subunits have been described in mammals. Integrin family members are membrane receptors involved in cell adhesion and recognition in a variety of processes including embryogenesis, hemostasis, tissue repair, immune response and metastatic diffusion of tumor cells. This gene encodes a beta subunit. Multiple alternatively spliced transcript variants which encode different protein isoforms have been found for this gene. [provided by RefSeq]
<b>Molecular Mass</b>	114.8 kDa
<b>AA Sequence</b>	MNLQPIFWIGLISSVCCVFAQTDENRCLKANAKSCGECIQAGPNCGWCTNSTFLQE GMPTSARCDLEALKKKKGCPPDDIENPRGSKDIKKNKNVTNRSKGTAEKLPEDITQ IQPQQLVLRRLRSGEPQTFTLKFKRAEDYPIDLYYMDLSYSMKDDLENVKS LGTDLM NEMRRITSDFRIGFGSFVEKTVMPYISTTPAKLRNPCTSEQNCTSPFSYKNVLSLTNK GEVFNELVGKQRISGNLDSPEGGFDAIMQVAVCGSLIGWRNVTRLLVFSTDAGFHF AGDGKLGIVLPNDGQCHLENNMYTMSHYDYPSIAHLVQKLENNIQTIFAVTEEF QPVYKELKNLIPKSAVGTLSANSSNVIQLIIDAYNSLSSEVILENGKLSEGVTISYKSYC

 Tel: 1-631-559-9269    1-516-512-3133

 Email: [info@creative-biomart.com](mailto:info@creative-biomart.com)     Fax: 1-631-938-8127

 45-1 Ramsey Road, Shirley, NY 11967, USA

KNGVNGTGENGRKCSNISIGDEVQFEISITSNKCPKKDSDFSFKIRPLGFTEEEVILQY  
 ICECECQSEGIPESPKCHEGNGTFECGACRCNEGRVGRHCECSTDEVNSEDMDAY  
 CRKENSSEICSNNGECVCGQCVCVKRKRDNNTNEIYSGKFCECDNFNCDRSNGLICGG  
 NGVCKCRVCECNPNYTGSACDCSLDTSTCEASNGQICNNGRGICECGVCKCTDPKF  
 QGQTCEMCQTCLGVCAEHKECVQCRAFNGKGEKKTCTQECSYFNITKVESRDKLP  
 QPVQPDPVSHCKEKDVDDCWFYFTYSVNGNNEVMVHVVENPECPTGPDIIPIVAGV  
 VAGIVLIGLALLLIWKLLMIIHDRREFAKFEKEKMNAKWDTGENPIYKSAVTTVVNPKY  
 EGK

**Applications**

Enzyme-linked Immunoabsorbent Assay  
 Western Blot (Recombinant protein)  
 Antibody Production  
 Protein Array

**Notes**

Best use within three months from the date of receipt of this protein.

**Storage**

Store at -80 centigrade. Aliquot to avoid repeated freezing and thawing.

**Storage Buffer**

50 mM Tris-HCl, 10 mM reduced Glutathione, pH=8.0 in the elution buffer.

## GENE INFORMATION

**Gene Name**

ITGB1 integrin, beta 1 (fibronectin receptor, beta polypeptide, antigen CD29 includes MDF2, MSK12) [ Homo sapiens ]

**Official Symbol**

ITGB1

**Synonyms**

ITGB1; integrin, beta 1 (fibronectin receptor, beta polypeptide, antigen CD29 includes MDF2, MSK12); FNRB, MDF2, MSK12; integrin beta-1; CD29; GPIIA; integrin VLA-4 beta subunit; very late activation protein, beta polypeptide; FNRB; MDF2; VLAB; MSK12; VLA-BETA;

 Tel: 1-631-559-9269 1-516-512-3133

 Email: [info@creative-biomart.com](mailto:info@creative-biomart.com)  Fax: 1-631-938-8127

 45-1 Ramsey Road, Shirley, NY 11967, USA

**Gene ID** 3688

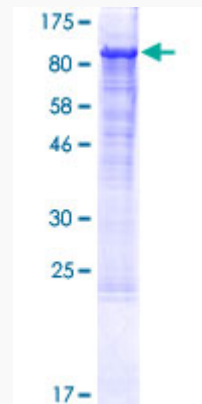
**mRNA Refseq** NM\_002211

**Protein Refseq** NP\_002202

**MIM** 135630

**UniProt ID** P05556

**Quality Control  
Testing**



12.5% SDS-PAGE Stained with Coomassie Blue

 Tel: 1-631-559-9269 1-516-512-3133

 Email: [info@creative-biomart.com](mailto:info@creative-biomart.com)  Fax: 1-631-938-8127

 45-1 Ramsey Road, Shirley, NY 11967, USA