

Recombinant Rat ITGB1 Protein (21-729 aa), His-SUMO-tagged

Cat. No. ITGB1-590R Lot. No. (See product label)

SPECIFICATION

Product Overview	Recombinant Rat ITGB1 Protein (21-729 aa) is produced by E. coli expression system. This protein is fused with a 6xHis-SUMO tag at the N-terminal. Protein Description: Partial.
Species	Rat
Source	E.coli
ProteinLength	21-729 aa
Description	<p>Integrins alpha-1/beta-1, alpha-2/beta-1, alpha-10/beta-1 and alpha-11/beta-1 are receptors for collagen. Integrins alpha-1/beta-1 and alpha-2/beta-2 recognize the proline-hydroxylated sequence G-F-P-G-E-R in collagen. Integrins alpha-2/beta-1, alpha-3/beta-1, alpha-4/beta-1, alpha-5/beta-1, alpha-8/beta-1, alpha-10/beta-1, alpha-11/beta-1 and alpha-V/beta-1 are receptors for fibronectin. Alpha-4/beta-1 recognizes one or more domains within the alternatively spliced CS-1 and CS-5 regions of fibronectin. Integrin alpha-5/beta-1 is a receptor for fibrinogen. Integrin alpha-1/beta-1, alpha-2/beta-1, alpha-6/beta-1 and alpha-7/beta-1 are receptors for lamimin. Integrin alpha-4/beta-1 is a receptor for VCAM1 and recognizes the sequence Q-I-D-S in VCAM1. Integrin alpha-9/beta-1 is a receptor for VCAM1, cytotactin and osteopontin. It recognizes the sequence A-E-I-D-G-I-E-L in cytotactin. Integrin alpha-3/beta-1 is a receptor for epiligrin, thrombospondin and CSPG4. Integrin alpha-3/beta-1 provides a docking site for FAP (seprase) at invadopodia plasma mbranes in a collagen-dependent manner and hence may participate in the</p>

 Tel: 1-631-559-9269 1-516-512-3133

 Email: info@creative-biomart.com  Fax: 1-631-938-8127

 45-1 Ramsey Road, Shirley, NY 11967, USA

adhesion, formation of invadopodia and matrix degradation processes, promoting cell invasion. Alpha-3/beta-1 may mediate with LGALS3 the stimulation by CSPG4 of endothelial cells migration. Integrin alpha-V/beta-1 is a receptor for vitronectin. Beta-1 integrins recognize the sequence R-G-D in a wide array of ligands. When associated with alpha-7/beta-1 integrin, regulates cell adhesion and laminin matrix deposition. Involved in promoting endothelial cell motility and angiogenesis. Involved in osteoblast compaction through the fibronectin fibrillogenesis cell-mediated matrix assembly process and the formation of mineralized bone nodules. May be involved in up-regulation of the activity of kinases such as PKC via binding to KRT1. Together with KRT1 and GNB2L1, serves as a platform for SRC activation or inactivation. Plays a mechanistic adhesive role during telophase, required for the successful completion of cytokinesis.

Form Tris-based buffer, 50% glycerol

Molecular Mass 94.4 kDa

AA Sequence

QTDKNRCLKANAKSCGECIQAGPNCGWCTNTTFLQEGMPTSARCDDLEALKKKGC
 HPSDIENPRGSQTIKKNKNVTNRSKGMAEKLRPEDITQIQPQQLLLKLRSGEPPQKFTL
 KFKRAEDYPIDLYYLMDSLYSMKDDLENVKSLGTDLMNEMRRITSDFRIGFGSFVEK
 TVMPYISTTPAKLRNPCTSEQNCTSPFSYKNVLSLTDRGEFFNELVGQQRISGNLDS
 PEGGFDAIMQVAVCGSLIGWRNVTRLLVFSTDAGFHFAGDGKLGIVLPNDGQCHL
 ENNVYTM SHYYDYPSIAHLVQKLENNIQTIFAVTEEFQPVYKELKNLIPKSAVGTLS
 GNSSNVIQLIIDAYNSLSSEVILENSKLPDGV TINYKSYCKNGVNGTG ENGRKCSNISI
 GDEVQFEISITANKCPNKESENQLKLNPLGFTEEEVVLQFICKCNCQSHGIPASPKC
 HEGNGTFECGACRCNEGRVGRHCECSTDEVNSEMDAYCRKENSSEICSNNGEC
 VCGQCVCRKRENTNEIYSGKFCECDNFNCDRSNGLICGGNGVCRRCRVCECYPNYT
 GSACDCSLDTVPCVATNGQICN GRGICECGACKCTDPKFQGP TCETCQTCLGVCA
 EHKECVQCRAF NKGEKKDTCAQECSHFNLTKVESREKLPQP VQVDPVTHCKEKDID
 DCWFYFTYSVNSKGEAHVHVETPDCPTGPD

 Tel: 1-631-559-9269 1-516-512-3133

 Email: info@creative-biomart.com  Fax: 1-631-938-8127

 45-1 Ramsey Road, Shirley, NY 11967, USA

Purity	> 90% as determined by SDS-PAGE.
Notes	Repeated freezing and thawing is not recommended. Store working aliquots at 4 centigrade for up to one week.
Storage	The shelf life is related to many factors, storage state, buffer ingredients, storage temperature and the stability of the protein itself. Generally, the shelf life of liquid form is 6 months at -20 centigrade/-80 centigrade. The shelf life of lyophilized form is 12 months at -20 centigrade/-80 centigrade.
Concentration	A hardcopy of COA with concentration instruction is sent along with the products.

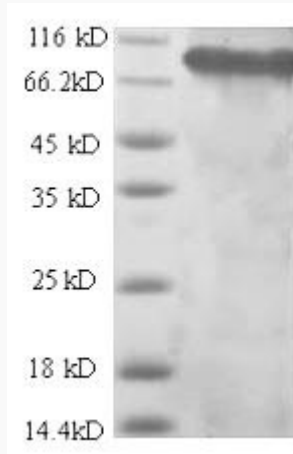
GENE INFORMATION

Gene Name	Itgb1 integrin, beta 1 [Rattus norvegicus]
Official Symbol	ITGB1
Synonyms	ITGB1; integrin, beta 1; integrin beta-1; beta OL;
Gene ID	24511
mRNA Refseq	NM_017022
Protein Refseq	NP_058718
UniProt ID	P49134


 Tel: 1-631-559-9269 1-516-512-3133

 Email: info@creative-biomart.com  Fax: 1-631-938-8127

 45-1 Ramsey Road, Shirley, NY 11967, USA



(Tris-Glycine gel) Discontinuous SDS-PAGE (reduced) with 5% enrichment gel and 15% separation gel.

 Tel: 1-631-559-9269 1-516-512-3133

 Email: info@creative-biomart.com  Fax: 1-631-938-8127

 45-1 Ramsey Road, Shirley, NY 11967, USA