

## Recombinant Human ITGB1BP1 Protein, GST-tagged

Cat. No. ITGB1BP1-4985H Lot. No. (See product label)

### SPECIFICATION

<b>Product Overview</b>	Human ITGB1BP1 full-length ORF ( AAH12264, 1 a.a. - 200 a.a.) recombinant protein with GST-tag at N-terminal.
<b>Species</b>	Human
<b>Source</b>	Wheat Germ
<b>Description</b>	The cytoplasmic domains of integrins are essential for cell adhesion. The protein encoded by this gene binds to the beta1 integrin cytoplasmic domain. The interaction between this protein and beta1 integrin is highly specific. Two isoforms of this protein are derived from alternatively spliced transcripts. The shorter form of this protein does not interact with the beta1 integrin cytoplasmic domain. The longer form is a phosphoprotein and the extent of its phosphorylation is regulated by the cell-matrix interaction, suggesting an important role of this protein during integrin-dependent cell adhesion. [provided by RefSeq]
<b>Molecular Mass</b>	47.74 kDa
<b>AA Sequence</b>	MFRKGGKRRHSSSSSSQSSEISTKSKSVDSLLGGLSRSSSTVASLDTDSTKSSGQSNNN SDTCAEFRIKYVGAIEKLLKLGKLEGLPLDLINYIDVAQQDGKLPFVPEEEEFIMGVS KYGIVVSTSDQYDVLHRHALYLIIRMVCYDDGLGVGKSLALKTDDASNEEYSLWVY QCNSLEQAQAICKVLSTAFDSVLTSEKP
<b>Applications</b>	Enzyme-linked Immunoabsorbent Assay Western Blot (Recombinant protein)

 Tel: 1-631-559-9269 1-516-512-3133

 Email: [info@creative-biomart.com](mailto:info@creative-biomart.com)  Fax: 1-631-938-8127

 45-1 Ramsey Road, Shirley, NY 11967, USA

	Antibody Production Protein Array
<b>Notes</b>	Best use within three months from the date of receipt of this protein.
<b>Storage</b>	Store at -80 centigrade. Aliquot to avoid repeated freezing and thawing.
<b>Storage Buffer</b>	50 mM Tris-HCl, 10 mM reduced Glutathione, pH=8.0 in the elution buffer.
<b>GENE INFORMATION</b>	
<b>Gene Name</b>	ITGB1BP1 integrin beta 1 binding protein 1 [ Homo sapiens ]
<b>Official Symbol</b>	ITGB1BP1
<b>Synonyms</b>	ITGB1BP1; integrin beta 1 binding protein 1; integrin beta-1-binding protein 1; bodenin; ICAP 1A; ICAP 1alpha; ICAP 1B; ICAP1; ICAP1A; ICAP1B; integrin cytoplasmic domain associated protein 1; integrin cytoplasmic domain associated protein 1 alpha; integrin cytoplasmic domain associated protein 1 beta; ICAP-1; integrin cytoplasmic domain-associated protein 1; integrin cytoplasmic domain-associated protein 1-beta; integrin cytoplasmic domain-associated protein 1-alpha; ICAP-1A; ICAP-1B; ICAP-1alpha; DKFZp686K08158;
<b>Gene ID</b>	9270
<b>mRNA Refseq</b>	NM_004763
<b>Protein Refseq</b>	NP_004754
<b>MIM</b>	607153

 Tel: 1-631-559-9269 1-516-512-3133

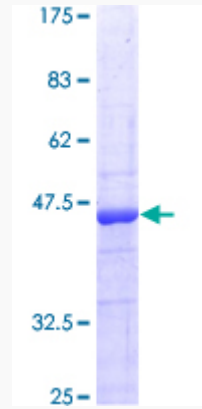
 Email: [info@creative-biomart.com](mailto:info@creative-biomart.com)  Fax: 1-631-938-8127

 45-1 Ramsey Road, Shirley, NY 11967, USA

UniProt ID

O14713

Quality Control  
Testing



12.5% SDS-PAGE Stained with Coomassie Blue

 Tel: 1-631-559-9269 1-516-512-3133

 Email: [info@creative-biomart.com](mailto:info@creative-biomart.com)  Fax: 1-631-938-8127

 45-1 Ramsey Road, Shirley, NY 11967, USA