

Recombinant Human ITGB1BP2 Protein, Myc/DDK-tagged, C13 and N15-labeled

Cat. No. ITGB1BP2-2946H **Lot. No.** (See product label)

SPECIFICATION

Product Overview	ITGB1BP2 MS Standard C13 and N15-labeled recombinant protein (NP_036410) with a C-terminal MYC/DDK tag, was expressed in HEK293 cells.
Species	Human
Source	HEK293
Description	This gene encodes a protein with two cysteine and histidine-rich (CHORD) domains, PXXP motifs, YXXI/P motifs, putative SH2 and SH3 domain binding motifs, and an acidic region at the C-terminus that can bind calcium. Two hybrid analysis showed that this protein interacts with the cytoplasmic domain of the beta 1 integrin subunit and is thought to act as a chaperone protein. Studies in the mouse ortholog of this gene indicate that absence of this gene in mouse results in failed cardiac hypertrophy in response to mechanical stress. Alternative splicing results in multiple transcript variants encoding different isoforms, including an isoform that lacks several domains, including one of the CHORD domains.
Molecular Mass	38.2 kDa
AA Sequence	MSLLCRNKGCGQHFDPNLTPDSCCHHPGVPIFHDALKGWSCCRKRTVDFSEFLNI KGCTMGPHCAEKLPEAPQPEGPATSSSLQEQQPLNVIPKSAETLRRERPKSELPLKL LPLNISQALEMALEQKELDQEPGAGLDSLIRTGSSCQNPGCDAVYQGPESDATPCT YHPGAPRFHEGMKSWSCCGIQTLDGFAFLAQPGCRVGRHDWGKQLPASCRHDW

 Tel: 1-631-559-9269 1-516-512-3133

 Email: info@creative-biomart.com  Fax: 1-631-938-8127

 45-1 Ramsey Road, Shirley, NY 11967, USA

HQTDSLVVVTVYGGIPLPAFNWVKASQTELVHVHIVFDGNRVFQAQMKLWGVINVEQ
 SSVFLMPSRVEISLVKADPGSWAQLLEHPDALAKKARAGVVLEMDEEESDDSDDDL
 WTEEEEEEEAMGETRTRPLEQKLISEEDLAANDILDYKDDDDKV

Purity > 80% as determined by SDS-PAGE and Coomassie blue staining

Stability Stable for 3 months from receipt of products under proper storage and handling conditions.

Storage Store at -80 centigrade. Avoid repeated freeze-thaw cycles.

Concentration 50 µg/mL as determined by BCA

Storage Buffer 100 mM glycine, 25 mM Tris-HCl, pH 7.3.

GENE INFORMATION

Gene Name [ITGB1BP2 integrin subunit beta 1 binding protein 2 \[Homo sapiens \(human\) \]](#)

Official Symbol [ITGB1BP2](#)

Synonyms ITGB1BP2; integrin beta 1 binding protein (melusin) 2; integrin beta-1-binding protein 2; CHORDC3; ITGB1BP; MELUSIN; MSTP015; MGC119214;

Gene ID [26548](#)

mRNA Refseq [NM_012278](#)

Protein Refseq [NP_036410](#)

MIM [300332](#)

 Tel: 1-631-559-9269 1-516-512-3133

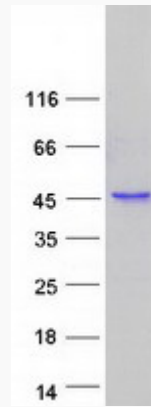
 Email: info@creative-biomart.com  Fax: 1-631-938-8127

 45-1 Ramsey Road, Shirley, NY 11967, USA

UniProt ID

Q9UKP3

SDS-PAGE



 Tel: 1-631-559-9269 1-516-512-3133

 Email: info@creative-biomart.com  Fax: 1-631-938-8127

 45-1 Ramsey Road, Shirley, NY 11967, USA