

Recombinant Human ITGB1BP2 Protein, GST-tagged

Cat. No. ITGB1BP2-4982H Lot. No. (See product label)

SPECIFICATION

Product Overview	Human ITGB1BP2 full-length ORF (NP_036410.1, 1 a.a. - 347 a.a.) recombinant protein with GST-tag at N-terminal.
Species	Human
Source	Wheat Germ
Description	This gene encodes a protein with two cysteine and histidine-rich (CHORD) domains, PXXP motifs, YXXI/P motifs, putative SH2 and SH3 domain binding motifs, and an acidic region at the C-terminus that can bind calcium. Two hybrid analysis showed that this protein interacts with the cytoplasmic domain of the beta 1 integrin subunit and is thought to act as a chaperone protein. Studies in the mouse ortholog of this gene indicate that absence of this gene in mouse results in failed cardiac hypertrophy in response to mechanical stress. Alternative splicing results in multiple transcript variants encoding different isoforms, including an isoform that lacks several domains, including one of the CHORD domains. [provided by RefSeq, May 2017]
Molecular Mass	64.8 kDa
AA Sequence	MSLLCRNKGCGQHFDPNLTPDSCCHHPGVPIFHDALKGWSCCRKRTVDFSEFLNI KGCTMGPHCAEKLPEAPQPEGPATSSSLQEQKPLNVIPKSAETLRRERPKSELPLKL LPLNISQALEMALEQKELDQEPGAGLDSLIRTGSSCQNP GCDAVYQGPESDATPCT YHPGAPRFHEGMKSWSCCGIQTLDFGAFLAQPGCRVGRHDWGKQLPASCRHDW HQTDSL VVVTVYGGIPLPAFNWVKASQTELHVHIVFDGNRVFQAQMKLWGVINVEQ

 Tel: 1-631-559-9269 1-516-512-3133

 Email: info@creative-biomart.com  Fax: 1-631-938-8127

 45-1 Ramsey Road, Shirley, NY 11967, USA

SSVFLMPSRVEISLVKADPGSWAQLHPDALAKKARAGVVLEMDEEESDDSDDDL
WTEEEEEEEAMGE

Applications
Enzyme-linked Immunoabsorbent Assay
Western Blot (Recombinant protein)
Antibody Production
Protein Array

Notes Best use within three months from the date of receipt of this protein.

Storage Store at -80 centigrade. Aliquot to avoid repeated freezing and thawing.

Storage Buffer 50 mM Tris-HCl, 10 mM reduced Glutathione, pH=8.0 in the elution buffer.

GENE INFORMATION

Gene Name [ITGB1BP2 integrin beta 1 binding protein \(melusin\) 2 \[Homo sapiens \]](#)

Official Symbol [ITGB1BP2](#)

Synonyms ITGB1BP2; integrin beta 1 binding protein (melusin) 2; integrin beta-1-binding protein 2; CHORDC3; ITGB1BP; MELUSIN; MSTP015; MGC119214;

Gene ID [26548](#)

mRNA Refseq [NM_012278](#)

Protein Refseq [NP_036410](#)

MIM [300332](#)

 Tel: 1-631-559-9269 1-516-512-3133

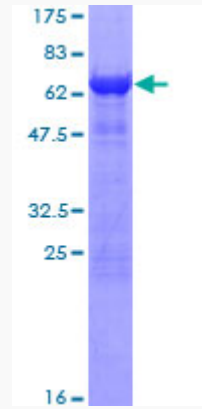
 Email: info@creative-biomart.com  Fax: 1-631-938-8127

 45-1 Ramsey Road, Shirley, NY 11967, USA

UniProt ID

Q9UKP3

Quality Control
Testing



12.5% SDS-PAGE Stained with Coomassie Blue

 Tel: 1-631-559-9269 1-516-512-3133

 Email: info@creative-biomart.com  Fax: 1-631-938-8127

 45-1 Ramsey Road, Shirley, NY 11967, USA