

Recombinant Human ITGB3 Protein, His-tagged

Cat. No. ITGB3-16H Lot. No. (See product label)

SPECIFICATION

Product Overview	Recombinant Human ITGB3 Protein (aa 135-377) with a His tag was expressed in E. coli.
Species	Human
Source	E.coli
ProteinLength	135-377 a.a.
Description	The ITGB3 protein product is the integrin beta chain beta 3. Integrins are integral cell-surface proteins composed of an alpha chain and a beta chain. A given chain may combine with multiple partners resulting in different integrins. Integrin beta 3 is found along with the alpha IIb chain in platelets. Integrins are known to participate in cell adhesion as well as cell-surface mediated signalling.
Molecular Mass	32.9 kDa
Purity	Greater than 95%
Stability	Store at 4 centigrade for up to 1 month, or aliquot and store at -80 centigrade for up to 1 year. Avoid freeze-thaw cycles.
Storage Buffer	Lyophilized from PBS, pH 7.4, 1 mM DTT, 5% Trehalose, 0.01% Sarcosyl, ProClin™ 300

 Tel: 1-631-559-9269 1-516-512-3133

 Email: info@creative-biomart.com  Fax: 1-631-938-8127

 45-1 Ramsey Road, Shirley, NY 11967, USA

Reconstitution Reconstitute in sterile PBS, pH 7.2-7.4.

GENE INFORMATION

Gene Name [ITGB3 integrin subunit beta 3 \[Homo sapiens \(human\) \]](#)

Official Symbol [ITGB3](#)

Synonyms ITGB3; integrin subunit beta 3; GT; GT2; CD61; GP3A; BDPLT2; GPIIIa; BDPLT16; BDPLT24; integrin beta-3; antigen CD61; integrin beta 3; integrin beta chain, beta 3; integrin, beta 3 (platelet glycoprotein IIIa, antigen CD61); platelet membrane glycoprotein IIIa

Gene ID [3690](#)

mRNA Refseq [NM_000212](#)

Protein Refseq [NP_000203](#)

MIM [173470](#)

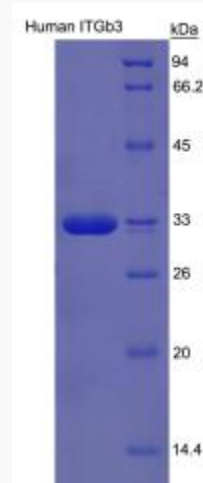
UniProt ID [P05106](#)

 Tel: 1-631-559-9269 1-516-512-3133

 Email: info@creative-biomart.com  Fax: 1-631-938-8127

 45-1 Ramsey Road, Shirley, NY 11967, USA

SDS-PAGE



Recombinant Integrin Beta 3 By SDS-PAGE

 Tel: 1-631-559-9269 1-516-512-3133

 Email: info@creative-biomart.com  Fax: 1-631-938-8127

 45-1 Ramsey Road, Shirley, NY 11967, USA