

# Recombinant Human ITGB3 Protein, Myc/DDK-tagged, C13 and N15-labeled

**Cat. No.** ITGB3-4733H    **Lot. No.** (See product label)

## SPECIFICATION

<b>Product Overview</b>	ITGB3 MS Standard C13 and N15-labeled recombinant protein (NP_000203) with a C-terminal MYC/DDK tag, was expressed in HEK293 cells.
<b>Species</b>	Human
<b>Source</b>	HEK293
<b>Description</b>	The ITGB3 protein product is the integrin beta chain beta 3. Integrins are integral cell-surface proteins composed of an alpha chain and a beta chain. A given chain may combine with multiple partners resulting in different integrins. Integrin beta 3 is found along with the alpha IIb chain in platelets. Integrins are known to participate in cell adhesion as well as cell-surface mediated signalling.
<b>Molecular Mass</b>	87.06 kDa
<b>AA Sequence</b>	MRARPRRPLWATVLALGALAGVGVGGPNICTTRGVSSCQQCLAVSPMCAWCSDE ALPLGSPRCDLKENLLKDNCAPESEIEFPVSEARVLEDRPLSDKSGSDSSQVTQVSP QRIALRLRPDDSKNFSIQVRQVEDYPVDIYYLMDLSYSMKDDLWSIQNLGTKLATQM RKLTSNLRIGFGAFVDKPVSPYMYISPPEALENPCYDMKTTCLPMFGYKHVLTLDQ VTRFNEEVKKQSVSRNRDAPEGGFDAIMQATVCDEKIGWRNDASHLLVFTTDAKTHI ALDGRLAGIVQPNDGQCHVGSNDNHYSASTTMDYPSLGLMTEKLSQKNINLIFAVTEN VVNLYQNYSELIPGTTVGVLSDSSNVLQLIVDAYGKIRSKVELEVRDLPEELSLSFN ATCLNNEVIPGLKSCMGLKIGDTVSFSIEAKVRGCPQEKEKSFTIKPVGFKDSLIVQVT

 Tel: 1-631-559-9269    1-516-512-3133

 Email: [info@creative-biomart.com](mailto:info@creative-biomart.com)     Fax: 1-631-938-8127

 45-1 Ramsey Road, Shirley, NY 11967, USA

FDCDCACQAQAEPNSHRCNNGNGTFECGVCRCGPGWLGSQCECSEEDYRPSQQ  
 DECSREGQPVCVCSQRGECLCGQCVCHSSDFGKITGKYCECDDFSCVRYKGEMCS  
 GHGQCSCGDCLCDSJWTGYYCNCTTRTDTCMSSNGLLCSGRGKCECGSCVCIQP  
 GSYGDTCEKCPTCPDACTFKKECVECKKFDRGALHDENTCNRYCRDEIESVKELKD  
 TGKDAVNCTYKNEDDCVVRFQYYEDSSGKSILYVVEEPECPKGPDILVLLSVMGAI  
 LLIGLAALLIWKLLITIHDRKEFAKFEERARAKWDTANNPLYKEATSTFTNITYRGTS  
 GPTRTRRLEQKLISEEDLAANDILDYKDDDDKV

**Purity** > 80% as determined by SDS-PAGE and Coomassie blue staining

**Stability** Stable for 3 months from receipt of products under proper storage and handling conditions.

**Storage** Store at -80 centigrade. Avoid repeated freeze-thaw cycles.

**Concentration** 50 µg/mL as determined by BCA

**Storage Buffer** 100 mM glycine, 25 mM Tris-HCl, pH 7.3.

## GENE INFORMATION

**Gene Name** [ITGB3 integrin subunit beta 3 \[ Homo sapiens \(human\) \]](#)

**Official Symbol** [ITGB3](#)

**Synonyms** ITGB3; integrin, beta 3 (platelet glycoprotein IIIa, antigen CD61); GP3A; integrin beta-3; CD61; GPIIIa; platelet glycoprotein IIIa; platelet membrane glycoprotein IIIa; GT; BDPLT2;

**Gene ID** [3690](#)

 Tel: 1-631-559-9269 1-516-512-3133

 Email: [info@creative-biomart.com](mailto:info@creative-biomart.com)  Fax: 1-631-938-8127

 45-1 Ramsey Road, Shirley, NY 11967, USA

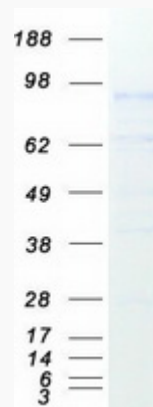
mRNA Refseq [NM\\_000212](#)

Protein Refseq [NP\\_000203](#)

MIM [173470](#)

UniProt ID [P05106](#)

SDS-PAGE



 Tel: 1-631-559-9269 1-516-512-3133

 Email: [info@creative-biomart.com](mailto:info@creative-biomart.com)  Fax: 1-631-938-8127

 45-1 Ramsey Road, Shirley, NY 11967, USA