

## Recombinant Human ITGB4 Protein, GST-tagged

**Cat. No.** ITGB4-4972H    **Lot. No.** (See product label)

### SPECIFICATION

<b>Product Overview</b>	Human ITGB4 partial ORF ( NP_000204, 28 a.a. - 137 a.a.) recombinant protein with GST-tag at N-terminal.
<b>Species</b>	Human
<b>Source</b>	Wheat Germ
<b>Description</b>	Integrins are heterodimers comprised of alpha and beta subunits, that are noncovalently associated transmembrane glycoprotein receptors. Different combinations of alpha and beta polypeptides form complexes that vary in their ligand-binding specificities. Integrins mediate cell-matrix or cell-cell adhesion, and transduced signals that regulate gene expression and cell growth. This gene encodes the integrin beta 4 subunit, a receptor for the laminins. This subunit tends to associate with alpha 6 subunit and is likely to play a pivotal role in the biology of invasive carcinoma. Mutations in this gene are associated with epidermolysis bullosa with pyloric atresia. Multiple alternatively spliced transcript variants encoding distinct isoforms have been found for this gene. [provided by RefSeq]
<b>Molecular Mass</b>	37.84 kDa
<b>AA Sequence</b>	NRCKKAPVKSCTECVRVKDKCAYCTDEMFRDRRCNTQAELLAAGCQRESIVVMES SFQITEETQIDTTLRRSQMSPQGLRVRLRPGEERHFELEVFEPLVSPVDLYILMD
<b>Applications</b>	Enzyme-linked Immunoabsorbent Assay Western Blot (Recombinant protein)

 Tel: 1-631-559-9269    1-516-512-3133

 Email: [info@creative-biomart.com](mailto:info@creative-biomart.com)     Fax: 1-631-938-8127

 45-1 Ramsey Road, Shirley, NY 11967, USA

	Antibody Production Protein Array
<b>Notes</b>	Best use within three months from the date of receipt of this protein.
<b>Storage</b>	Store at -80 centigrade. Aliquot to avoid repeated freezing and thawing.
<b>Storage Buffer</b>	50 mM Tris-HCl, 10 mM reduced Glutathione, pH=8.0 in the elution buffer.
<b>GENE INFORMATION</b>	
<b>Gene Name</b>	ITGB4 integrin, beta 4 [ Homo sapiens ]
<b>Official Symbol</b>	ITGB4
<b>Synonyms</b>	ITGB4; integrin, beta 4; integrin beta-4; CD104; GP150; CD104 antigen; integrin beta-4 subunit;
<b>Gene ID</b>	3691
<b>mRNA Refseq</b>	NM_000213
<b>Protein Refseq</b>	NP_000204
<b>MIM</b>	147557
<b>UniProt ID</b>	P16144

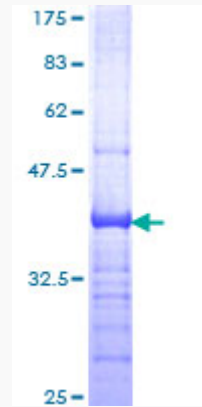
 Tel: 1-631-559-9269 1-516-512-3133

 Email: [info@creative-biomart.com](mailto:info@creative-biomart.com)  Fax: 1-631-938-8127

 45-1 Ramsey Road, Shirley, NY 11967, USA



**Quality Control  
Testing**



12.5% SDS-PAGE Stained with Coomassie Blue

Tel: 1-631-559-9269 1-516-512-3133

Email: [info@creative-biomart.com](mailto:info@creative-biomart.com) Fax: 1-631-938-8127

45-1 Ramsey Road, Shirley, NY 11967, USA