

# Recombinant Human ITGB4 Protein, Myc/DDK-tagged, C13 and N15-labeled

**Cat. No.** ITGB4-5769H    **Lot. No.** (See product label)

## SPECIFICATION

<b>Product Overview</b>	ITGB4 MS Standard C13 and N15-labeled recombinant protein (NP_000204) with a C-terminal MYC/DDK tag, was expressed in HEK293 cells.
<b>Species</b>	Human
<b>Source</b>	HEK293
<b>Description</b>	Integrins are heterodimers comprised of alpha and beta subunits, that are noncovalently associated transmembrane glycoprotein receptors. Different combinations of alpha and beta polypeptides form complexes that vary in their ligand-binding specificities. Integrins mediate cell-matrix or cell-cell adhesion, and transduced signals that regulate gene expression and cell growth. This gene encodes the integrin beta 4 subunit, a receptor for the laminins. This subunit tends to associate with alpha 6 subunit and is likely to play a pivotal role in the biology of invasive carcinoma. Mutations in this gene are associated with epidermolysis bullosa with pyloric atresia. Multiple alternatively spliced transcript variants encoding distinct isoforms have been found for this gene.
<b>Molecular Mass</b>	202.12 kDa
<b>AA Sequence</b>	MAGPRPSPWARLLLLAALISVLSLGTLANRCKKAPVKSCTECVRVDKDCAYCTDEMF RDRRCNTQAELLAAGCQRESIVVMESSEFQITEETQIDTTLRRSQMSPQGLRVLRP GEERHFELEVFEPLVLDLYILMDFSNSMSDDLNLKMGQNLARVLSQLTSDYTI

 Tel: 1-631-559-9269    1-516-512-3133

 Email: [info@creative-biomart.com](mailto:info@creative-biomart.com)     Fax: 1-631-938-8127

 45-1 Ramsey Road, Shirley, NY 11967, USA



GFGKFVDKVSVPQTDMRPEKLKEPWPNSDPPFSFKNVISLTEDVDEFNRNKLQGERI  
 SGNLDAPEGGFDAILQTAVCTRDIGWRPDSTHLLVFSTESAFHYEADGANVLAGIMS  
 RNDERCHLDTTGTYTQYRTQDYPSVPTLVRLAKHNIPIFAVTNYSYSYIEKLTHTYF  
 PVSSLGVLQEDSSNIVELLEAFNRIRSNLDIRALDSPRGLRTEVTSKMFQKTRTGSF  
 HIRRGVGIYQVQLRALEHVDGTHVCQLPEDQKGNHILKPSFSDGLKMDAGIICDVC  
 TCELQKEVRSARCSFNDFVCGQCVCSEGWGQTCNCSTGSLSDIQCLREGEDK  
 PCSGRGECQCGHCVCYGEGRYEGQFCEYDNFQCPRTSGFLCNDRGRCSMGQCV  
 CEPGWTGPSCDCPLSNATCIDSNGGICNRRGHCECGRCHCHQQSLYTDTICEINYS  
 AIHPGLCEDLRSCVQCQAWGTGEKKGRTCEEKCNFKVKMDELKRAEEVVVRCVSR  
 DEDDDCTYSYTMEGDGAPGNSTVLVHKKKDCPPGSFWWLIPLLLLLLPLALLLLL  
 CWKYCACCKACLALLPCCNRGHMVGFKEDHYMLRENLMASDHLDTPLMRSGNLK  
 GRDVVRWKVTNNMQRPGFATHAASINPTLVYGLSLRLARLCTENLLKPDTRCA  
 QLRQEVEENLNEVYRQISGVHKLQQTFRQQPNAGKKQDHTIVDTVLMAPRSAKPA  
 LLKLTQVEQRAFHDLVAPGYTTLADQDARGMVEFQEGVELVDVRVPLFIRPED  
 DDEKQLLVEAIDVPAGTATLGRRLVNITIIKEQARDVVSFEQPEFSVSRGDQVARIPVI  
 RRVLDGGKSQVSYRTQDGTAAQGNRDYIPVEGELLFQPGAEWKELVKLELQEV  
 SLLRGRQVRRFHVQLSNPKFGAHLGQPHSTTIIIRDPELDRSFTSQMLSSQPPPHG  
 DLGAPQNPNAKAAGSRKIHFNWLPSPGKPMGYRVKYWIQGDSESEAHLLDSKVP  
 VELTNLYPYCDYEMKVCAYGAQGEOPYSSLVSCRTHQEVPEPGRALFNVSSTVT  
 QLSWAEPATNGETAYEVCYGLVNDNRPIGPMKKVLVDNPNRMLLIENLRESQP  
 YRYTVKARNGAGWGPEREAINLATQPKRPMIPIIPDIPVDAQSGEDYDSFLMYSD  
 DVLRSPPSGSQRPSVSDDTGCGWKFEPDGEELDLRRVTWRLPPELIPRLSASSGRS  
 SDAEAPHGPPDDGGAGGKGGSLPRSATPGPPGEHLVNGRMDFAFPGSTNSLHRM  
 TTTSAAAYGTHLSPHVPHRVLSTSTLTRDYNLSTRSEHSHSTLXRDYSTLTSVSS  
 HDSRLTAGVPDTPTRLVFSALGPTSLRVSWQEPRCERPLQGYVVEYQLLNGGELHR  
 LNIPNPAQTSVVVEDLLPNHSYVFRVRAQSQEGWGREREGVITIESQVHPQSPLCPL  
 PGSFTLSTPSAPGPLVFTALSPDSLQLSWERPRRPNGDIVGYLVTCEMAQGGGPA  
 TAFRVDGDSPE SRLTVPGLSENVYPYKFKVQARTTEGFGPEREGITIESQDGGPFPPQ  
 LGSRAGLFQHPLQSEYSSITTTHTSATEPFLVDGPTLGAQHLEAGGSLTRHVTQEFV  
 SRTLTTSGTLSTHMDQQFFPTTRTRPLEQKLISEEDLAANDILDYKDDDDKV

Tel: 1-631-559-9269 1-516-512-3133

Email: [info@creative-biomart.com](mailto:info@creative-biomart.com) Fax: 1-631-938-8127

45-1 Ramsey Road, Shirley, NY 11967, USA

<b>Purity</b>	> 80% as determined by SDS-PAGE and Coomassie blue staining
<b>Stability</b>	Stable for 3 months from receipt of products under proper storage and handling conditions.
<b>Storage</b>	Store at -80 centigrade. Avoid repeated freeze-thaw cycles.
<b>Concentration</b>	50 µg/mL as determined by BCA
<b>Storage Buffer</b>	100 mM glycine, 25 mM Tris-HCl, pH 7.3.

## GENE INFORMATION

<b>Gene Name</b>	ITGB4 integrin subunit beta 4 [ Homo sapiens (human) ]
<b>Official Symbol</b>	ITGB4
<b>Synonyms</b>	ITGB4; integrin, beta 4; integrin beta-4; CD104; GP150; CD104 antigen; integrin beta-4 subunit;
<b>Gene ID</b>	3691
<b>mRNA Refseq</b>	NM_000213
<b>Protein Refseq</b>	NP_000204
<b>MIM</b>	147557
<b>UniProt ID</b>	P16144

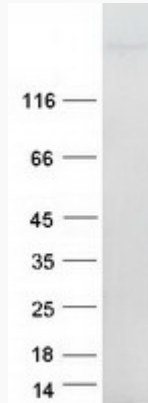
 Tel: 1-631-559-9269 1-516-512-3133

 Email: [info@creative-biomart.com](mailto:info@creative-biomart.com)  Fax: 1-631-938-8127

 45-1 Ramsey Road, Shirley, NY 11967, USA



**SDS-PAGE**



☎ Tel: 1-631-559-9269 1-516-512-3133

☎ Email: [info@creative-biomart.com](mailto:info@creative-biomart.com) ☎ Fax: 1-631-938-8127

☎ 45-1 Ramsey Road, Shirley, NY 11967, USA