

## Recombinant Human ITGB4 protein, His-tagged

Cat. No. ITGB4-694H Lot. No. (See product label)

### SPECIFICATION

<b>Product Overview</b>	Recombinant Human ITGB4 protein(NP_000204)(27-354 aa), fused with His tag, was expressed in E. coli.
<b>Species</b>	Human
<b>Source</b>	E.coli
<b>ProteinLength</b>	27-354 aa
<b>Form</b>	The purified protein was Lyophilized from sterile PBS (58mM Na <sub>2</sub> HPO <sub>4</sub> , 17mM NaH <sub>2</sub> PO <sub>4</sub> , 68mM NaCl, pH7.). 5 % trehalose and 5 % mannitol are added as protectants before lyophilization.
<b>AA Sequence</b>	ANRCKKAPVKSCTECVRVDKDCAYCTDEMFRDRRCNTQAELLAAGCQRESIVME SSFQITEETQIDTTLRRSQMSPQGLRVRLRPGEERHFELEVFEPLESPVDLYILMDFS NSMSDDLNLKMGQNLARVLSQLTSDYTIGFGKFVDKVSVPQTDMRPEKLKEPW PNSDPPFSFKNVISLTEDVDEFRNKLQGERISGNLDAPEGGFDAILQTAVCTRDIGW RPDSTHLLVFSTESAFHYEADGANVLAGIMSRNDERCHLDTTGTYTQYRTQDYPSV PTLVRLAKHNIPIFAVTNYSYSYYEKLHTYFPVSSLGVLQEDSSN
<b>Purity</b>	95%, by SDS-PAGE with Coomassie Brilliant Blue staining.
<b>Storage</b>	Short-term storage: Store at 2-8°C for (1-2 weeks). Long-term storage: Aliquot and store at -20°C to -80°C for up to 3 months, buffer containing 50% glycerol is recommended for reconstitution. Avoid repeat freeze-thaw

 Tel: 1-631-559-9269 1-516-512-3133

 Email: [info@creative-biomart.com](mailto:info@creative-biomart.com)  Fax: 1-631-938-8127

 45-1 Ramsey Road, Shirley, NY 11967, USA

cycles.

**Reconstitution**

Reconstitute at 0.25 g/μl in 200 μl sterile water for short-term storage.

Reconstitution with 200 μl 50% glycerol solution is recommended for longer term storage.

**GENE INFORMATION****Gene Name**

ITGB4 integrin, beta 4 [ Homo sapiens ]

**Official Symbol**

ITGB4

**Synonyms**

ITGB4; integrin, beta 4; integrin beta-4; CD104; GP150; CD104 antigen; integrin beta-4 subunit;

**Gene ID**

3691

**mRNA Refseq**

NM\_000213

**Protein Refseq**

NP\_000204

**MIM**

147557

**UniProt ID**

P16144

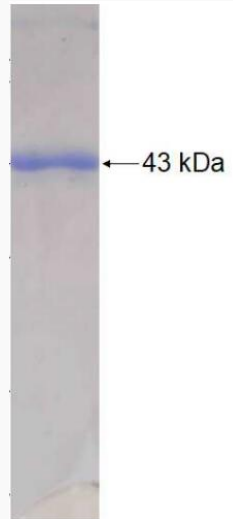
 Tel: 1-631-559-9269 1-516-512-3133

 Email: [info@creative-biomart.com](mailto:info@creative-biomart.com)  Fax: 1-631-938-8127

 45-1 Ramsey Road, Shirley, NY 11967, USA



SDS-PAGE



Tel: 1-631-559-9269 1-516-512-3133

Email: [info@creative-biomart.com](mailto:info@creative-biomart.com) Fax: 1-631-938-8127

45-1 Ramsey Road, Shirley, NY 11967, USA