

Recombinant Human ITGB5 Protein, His-tagged

Cat. No. ITGB5-251H Lot. No. (See product label)

SPECIFICATION

Product Overview	Recombinant Human ITGB5(Pro137~Ile378) fused with His tag at N-terminal was expressed in E. coli.
Species	Human
Source	E.coli
ProteinLength	Pro137~Ile378
Form	PBS, pH7.4, containing 0.01% SKL, 1mM DTT, 5% Trehalose and Proclin300.
Molecular Mass	31.1kDa
Endotoxin	<1.0EU per 1ug (determined by the LAL method)
Purity	> 95%
Applications	Positive Control; Immunogen; SDS-PAGE; WB. If bio-activity of the protein is needed, please check active protein
Stability	The thermal stability is described by the loss rate. The loss rate was determined by accelerated thermal degradation test, that is, incubate the protein at 37 centigrade for 48h, and no obvious degradation and precipitation were observed. The loss rate is less than 5% within the expiration date under appropriate storage condition.

 Tel: 1-631-559-9269 1-516-512-3133

 Email: info@creative-biomart.com  Fax: 1-631-938-8127

 45-1 Ramsey Road, Shirley, NY 11967, USA

Storage	Avoid repeated freeze/thaw cycles. Store at 2-8 centigrade for one month. Aliquot and store at -80 centigrade for 12 months.
----------------	--

Reconstitution	Reconstitute in PBS or others
-----------------------	-------------------------------

GENE INFORMATION

Gene Name	ITGB5 integrin, beta 5 [Homo sapiens]
------------------	---

Official Symbol	ITGB5
------------------------	-------

Synonyms	ITGB5; integrin, beta 5; integrin beta-5; FLJ26658;
-----------------	---

Gene ID	3693
----------------	------

mRNA Refseq	NM_002213
--------------------	-----------

Protein Refseq	NP_002204
-----------------------	-----------

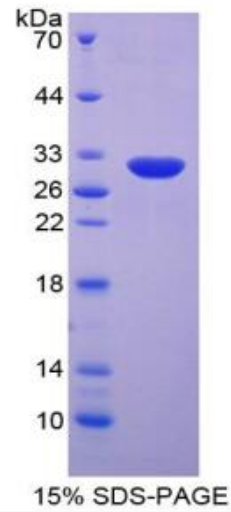
MIM	147561
------------	--------

UniProt ID	P18084
-------------------	--------

 Tel: 1-631-559-9269 1-516-512-3133

 Email: info@creative-biomart.com  Fax: 1-631-938-8127

 45-1 Ramsey Road, Shirley, NY 11967, USA



 Tel: 1-631-559-9269 1-516-512-3133

 Email: info@creative-biomart.com  Fax: 1-631-938-8127

 45-1 Ramsey Road, Shirley, NY 11967, USA