

Recombinant Human ITGB5 Protein, GST-tagged

Cat. No. ITGB5-4970H **Lot. No.** (See product label)

SPECIFICATION

Product Overview	Human ITGB5 full-length ORF (NP_002204.2, 1 a.a. - 799 a.a.) recombinant protein with GST-tag at N-terminal.
Species	Human
Source	Wheat Germ
Description	ITGB5 (Integrin Subunit Beta 5) is a Protein Coding gene. Diseases associated with ITGB5 include Villous Adenocarcinoma and Arrhythmogenic Right Ventricular Cardiomyopathy. Among its related pathways are GPCR Pathway and MAPK-Erk Pathway. GO annotations related to this gene include receptor activity and integrin binding. An important paralog of this gene is ITGB3.
Molecular Mass	114.5 kDa
AA Sequence	MPRAPAPLYACLLGLCALLPRLAGLNICTSGSATSCEECLLIHPKCAWCSKEDFGSP RSITSRCDLRANLVKNGCGGEIESPASSFHVLRSLPLSSKSGSAGWDVIQMTPQEI AVNLRPGDKTTFQLQVRQVEDYPVDLYYLMDSL SSMKDDLDNIRSLGTKLAEEMRK LTSNFRLGFGSFVDKDISPFSYTAPRYQTNPCIGYKLPNCVPSFGFRHLLPLTDRVD SFNEEVRKQRVSRNRDAPEGGFDAVLQAAVCKEKIGWRKDALHLLVFTTDDVPHIA LDGKLGGLVQPHDGQCHLNEANEYTASNQMDYPSLALLGEKLAENNINLIFAVTKNH YMLYKNFTALIPGTTVEILDGDSKNIIQLIINAYNSIRSKVELSVWDQPEDLNLFATC QDGVSYPGQRKCEGLKIGDTASFEVSLEARSCPSRHTEHV FALRPVGFGRDSLEVGV TYNCTCGCSVGLPNSARCNGSGTYVCGLCECSPGYLGTRCECQDGENQSVYQN

 Tel: 1-631-559-9269 1-516-512-3133

 Email: info@creative-biomart.com  Fax: 1-631-938-8127

 45-1 Ramsey Road, Shirley, NY 11967, USA

LCREAEGKPLCSGRGDCSCNQCSCFESEFGKIYGPFCEDNFSCARNKGVLCSGH
 GECHCGECKCHAGYIGDNCNCSTDISTCRGRDGGQICSERGHCLCGQCQCTEPGAF
 GEMCEKCPTCPDACSTKRDCVECLLLHSGKPDNQTCHSLCRDEVITWVDTIVKDDQ
 EAVLCFYKTAKDCVMMFTYVELPSGKSNLTVLREPECGNTPNAMTILLAVVGSILLVG
 LALLAIWKLLVTIHDRREFAKFQSERSRARYEMASNPLYRKPISTHTVDFTFNKFNKS
 YNGTVD

Applications	Enzyme-linked Immunoabsorbent Assay Western Blot (Recombinant protein) Antibody Production Protein Array
Notes	Best use within three months from the date of receipt of this protein.
Storage	Store at -80 centigrade. Aliquot to avoid repeated freezing and thawing.
Storage Buffer	50 mM Tris-HCl, 10 mM reduced Glutathione, pH=8.0 in the elution buffer.

GENE INFORMATION

Gene Name	ITGB5 integrin, beta 5 [Homo sapiens]
Official Symbol	ITGB5
Synonyms	ITGB5; integrin, beta 5; integrin beta-5; FLJ26658;
Gene ID	3693
mRNA Refseq	NM_002213
Protein Refseq	NP_002204

 Tel: 1-631-559-9269 1-516-512-3133

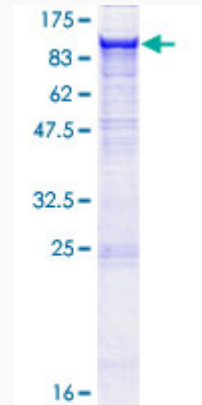
 Email: info@creative-biomart.com  Fax: 1-631-938-8127

 45-1 Ramsey Road, Shirley, NY 11967, USA

MIM 147561

UniProt ID P18084

**Quality Control
Testing**



12.5% SDS-PAGE Stained with Coomassie Blue

 Tel: 1-631-559-9269 1-516-512-3133

 Email: info@creative-biomart.com  Fax: 1-631-938-8127

 45-1 Ramsey Road, Shirley, NY 11967, USA