

# Recombinant Human integrin subunit beta 6 Protein, His-tagged

Cat. No. ITGB6-001H Lot. No. (See product label)

## SPECIFICATION

|                         |                                                                                                                                                                                                                                                                                                                                                                                                                                                                                                                        |
|-------------------------|------------------------------------------------------------------------------------------------------------------------------------------------------------------------------------------------------------------------------------------------------------------------------------------------------------------------------------------------------------------------------------------------------------------------------------------------------------------------------------------------------------------------|
| <b>Product Overview</b> | Recombinant Human ITGB6 Protein with C-His tag was expressed in HEK293.                                                                                                                                                                                                                                                                                                                                                                                                                                                |
| <b>Species</b>          | Human                                                                                                                                                                                                                                                                                                                                                                                                                                                                                                                  |
| <b>Source</b>           | HEK293                                                                                                                                                                                                                                                                                                                                                                                                                                                                                                                 |
| <b>ProteinLength</b>    | 22-707 aa                                                                                                                                                                                                                                                                                                                                                                                                                                                                                                              |
| <b>Description</b>      | This gene encodes a protein that is a member of the integrin superfamily. Members of this family are adhesion receptors that function in signaling from the extracellular matrix to the cell. Integrins are heterodimeric integral membrane proteins composed of an alpha chain and a beta chain. The encoded protein forms a dimer with an alpha v chain and this heterodimer can bind to ligands like fibronectin and transforming growth factor beta 1. Alternate splicing results in multiple transcript variants. |
| <b>Tag</b>              | C-His                                                                                                                                                                                                                                                                                                                                                                                                                                                                                                                  |
| <b>Molecular Mass</b>   | 75.1 kDa                                                                                                                                                                                                                                                                                                                                                                                                                                                                                                               |
| <b>AA Sequence</b>      | GCALGGAETCEDCLLIGPQCAWCAQENFTHPSGVGERCDTPANLLAKGCQLNFIEN<br>PVSQVEILKNKPLSVGRQKNSSDIVQIAPQSLILKLRPGGAQTLQVHVRQTEDYPVDL<br>YYLMDLSASMDDDLNTIKELGSRLSKEMSKLTSNFRLGFGSFVEKPVSPFVKTTPEEI<br>ANPCSSIPYFCLPTFGFKHILPLTND AERFNEIVKNQKISANIDTPEGGFDAIMQAAVC<br>KEKIGWRNDSLHLLVFVSDADSHFGMDSKLAGIVIPNDGLCHLDSKNEYSMSTVLEY                                                                                                                                                                                                      |

 Tel: 1-631-559-9269 1-516-512-3133

 Email: [info@creative-biomart.com](mailto:info@creative-biomart.com)  Fax: 1-631-938-8127

 45-1 Ramsey Road, Shirley, NY 11967, USA

PTIGQLIDKLVQNNVLLIFAVTQEQVHLYENYAKLIPGATVGLLQKDSGNILQLIISAYE  
 ELRSEVELEVLGDTEGLNLSFTAICNNGTLFQHQQKCSHMKVGD TASFSVTVNIPHC  
 ERRSRHIIKPVGLGDALELLVSPECNDCDCQKEVEVNSSKCHHGNGSFQCGVCACH  
 PGHMGPRCECGEDMLSTDSCKEAPDHPSCSGRGDCYCGQCICHLSPYGNIGPYC  
 QCDNFSCVRHKLLCGGNGDCDCGECVCRSGWTGEYCNCTTSTDSCVSEDGVLC  
 SGRGDCVCGKCVCTNPGASGPTCERCPTCGDPCNSKRSCIECHLSAAGQAREECV  
 DKCKLAGATISEEEDFSKDGSVSCSLQGENECLITFLITTDNEGKTIHSINEKDCPKP  
 PNHHHHHH

**Endotoxin** < 1.0 EU/μg of the protein by the LAL method.

**Purity** > 90% by SDS-PAGE

**Storage** Store it under sterile conditions at -20 to -80 centigrade. It is recommended that the protein be aliquoted for optimal storage. Avoid repeated freeze-thaw cycles.

**Concentration** 1 mg/mL

**Storage Buffer** Sterile PBS, pH7.4

## GENE INFORMATION

**Gene Name** [ITGB6 integrin subunit beta 6 \[ Homo sapiens \(human\) \]](#)

**Official Symbol** [ITGB6](#)

**Synonyms** ITGB6; integrin subunit beta 6; AI1H; integrin beta-6; integrin, beta 6

**Gene ID** [3694](#)

**mRNA Refseq** [NM\\_000888](#)

 Tel: 1-631-559-9269 1-516-512-3133

 Email: [info@creative-biomart.com](mailto:info@creative-biomart.com)  Fax: 1-631-938-8127

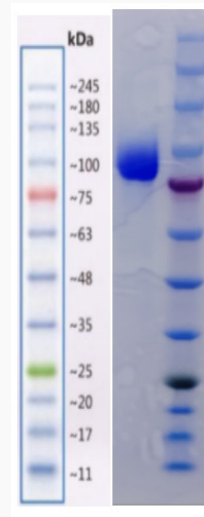
 45-1 Ramsey Road, Shirley, NY 11967, USA

**Protein Refseq** NP\_000879

**MIM** 147558

**UniProt ID** P18564

**SDS-PAGE**



Reducing 4%-20% SDS-PAGE (CBB stained) analysis profile of purified ITGB6.

 Tel: 1-631-559-9269 1-516-512-3133

 Email: [info@creative-biomart.com](mailto:info@creative-biomart.com)  Fax: 1-631-938-8127

 45-1 Ramsey Road, Shirley, NY 11967, USA