

## Recombinant Human ITGB6 protein, His-tagged

**Cat. No.** ITGB6-4674H    **Lot. No.** (See product label)

### SPECIFICATION

<b>Product Overview</b>	Recombinant Human ITGB6 protein(P18564)(22-707 aa), fused with C-terminal His tag, was expressed in Yeast.
<b>Species</b>	Human
<b>Source</b>	Yeast
<b>ProteinLength</b>	22-707 aa
<b>Form</b>	For liquid formulations, the standard storage buffer consists of a Tris or PBS based solution supplemented with 5-50% glycerol. When provided as lyophilized powder, the product undergoes freeze-drying from a Tris- or PBS-based formulation containing 6% trehalose, adjusted to pH 8.0 prior to the lyophilization process.
<b>Molecular Mass</b>	76.1 kDa
<b>AASequence</b>	GCALGGAETCEDCLLIGPQCAWCAQENFTHPSGVGERCDTPANLLAKGCQLNFIEN PVSQVEILKNKPLSVGRQKNSSDIVQIAPQSLILKLRPGGAQTLQVHVRQTEDYPVDL YYLMDLSASMDDDLNTIKELGSRLSKEMSKLTSNFRLGFGSFVEKPVSPFVKTTPEEI ANPCSSIPYFCLPTFGFKHILPLTND AERFNEIVKNQKISANIDTPEGGFDAIMQAAVC KEKIGWRNDSLHLLVFSADSHFGMDSKLAGIVIPNDGLCHLDSKNEYSMSTVLEY PTIGQLIDKLVQNNVLLIFAVTQEQVHLYENYAKLIPGATVGLLQKDSGNILQLIISAYE ELRSEVELEVLGDTEGLNLSFTAICNNGTLFQHQQKCSHMKVGDTASFSVTVNIPHC ERRSRHIIKPVGLGDALELLVSPECNDCQKEVEVNSSKCHHGNGSFQCGVCACH PGHMGPRCECGEDMLSTDSCKEAPDHPSCSGRGDCYCGQCICHLSPYGNIIYGPYC

 Tel: 1-631-559-9269    1-516-512-3133

 Email: [info@creative-biomart.com](mailto:info@creative-biomart.com)     Fax: 1-631-938-8127

 45-1 Ramsey Road, Shirley, NY 11967, USA



QCDNFSCVRHKGLLCGGNGDCDCGECVCRSGWTGEYCNCTTSTDSCVSEDGVLC  
SGRGDCVCGKCVCTNPGASGPTCERCPTCGDPCNSKRSCIECHLSAAGQAREECV  
DKCKLAGATISEEEDFSKDGSVSCSLQGENECLITFLITTDNEGKTIHSINEKDCPKP  
PN

**Purity** Greater than 85% as determined by SDS-PAGE.

**Storage** Store at -20°C/-80°C upon receipt, aliquoting is necessary for mutiple use. Avoid repeated freeze-thaw cycles.

**Reconstitution** Please reconstitute protein indeionized sterile water to a concentration of 0.1-1.0 mg/mL. Aliquot for long-term storage at -80°C.

## GENE INFORMATION

**Gene Name** [ITGB6 integrin, beta 6 \[ Homo sapiens \]](#)

**Official Symbol** [ITGB6](#)

**Synonyms** ITGB6; integrin, beta 6; integrin beta-6;

**Gene ID** [3694](#)

**mRNA Refseq** [NM\\_000888](#)

**Protein Refseq** [NP\\_000879](#)

**MIM** [147558](#)

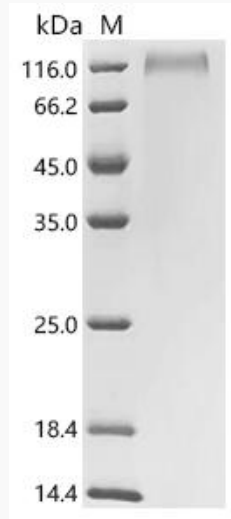
**UniProt ID** [P18564](#)

Tel: 1-631-559-9269 1-516-512-3133

Email: [info@creative-biomart.com](mailto:info@creative-biomart.com) Fax: 1-631-938-8127

45-1 Ramsey Road, Shirley, NY 11967, USA

**SDS-PAGE**



 Tel: 1-631-559-9269 1-516-512-3133

 Email: [info@creative-biomart.com](mailto:info@creative-biomart.com)  Fax: 1-631-938-8127

 45-1 Ramsey Road, Shirley, NY 11967, USA