

Recombinant Human ITGB6 Protein, GST-tagged

Cat. No. ITGB6-4968H **Lot. No.** (See product label)

SPECIFICATION

Product Overview Human ITGB6 full-length ORF (NP_000879.2, 1 a.a. - 788 a.a.) recombinant protein with GST-tag at N-terminal.

Species Human

Source Wheat Germ

Description This gene encodes a protein that is a member of the integrin superfamily. Members of this family are adhesion receptors that function in signaling from the extracellular matrix to the cell. Integrins are heterodimeric integral membrane proteins composed of an alpha chain and a beta chain. The encoded protein forms a dimer with an alpha v chain and this heterodimer can bind to ligands like fibronectin and transforming growth factor beta 1. Alternate splicing results in multiple transcript variants. [provided by RefSeq, Sep 2013]

Molecular Mass 112.3 kDa

AA Sequence MGIELLCLFFFLGRNDHVQGGCALGGAETCEDCLLIGPQCAWCAQENFTHPSGVG
 ERCDTPANLLAKGCQLNFIENPVSQVEILKNKPLSVGRQKNSSDIVQIAPQSLILKLRP
 GGAQTLQVHVRQTEDYPVDLYYLMDSLASMDDLNTIKELGSRLSKEMSKLTSNFR
 LGFGSFVEKPVSPFVKTTPEEIANPCSSIPYFCLPTFGFKHILPLTND AERFNEIVKNQ
 KISANIDTPEGGFDAIMQAAVCKEKIGWRNDSLHLLVFVSDADSHFGMDSKLAGIVIP
 NDGLCHLDSKNEYSMSTVLEYPTIGQLIDKLVQNNVLLIFAVTQEQQVHLYENYAKLIP
 GATVGLLQKDSGNILQLIISAYEELRSEVELEVLGDTEGLNLSFTAICNNGTLFQHQQK

 Tel: 1-631-559-9269 1-516-512-3133

 Email: info@creative-biomart.com  Fax: 1-631-938-8127

 45-1 Ramsey Road, Shirley, NY 11967, USA

CSHMKVGD TASFSVTVNIPHCERRSRHIIKPVGLGDALELLVSPECNDCQKEVEV
 NSSKCHHGNGSFQCGVCACHPGHMGRCECGEDMLSTDSCKEAPDHPSCSGRG
 DCYCGQCICHLSPYGNIGPYCQCDNFSCVRHKGLLCGGNGDCDCGECVCRSGW
 TGEYCNCCTTSTDSCVSEdGVLCsGRGDCVCGKCVCTNPGASGPTCERCPTCGDP
 CNSKRSCIECHLSAAGQAREECVDKCKLAGATISEEEDFSKDGSVSCSLQGENECLI
 TFLITTDNEGKTIHSINEKDCPKPPNIPMIMLGVSLAILLIGVVLLCIWKLLVSFHDRKE
 VAKFEAERSKAKWQTGTNPLYRGSTSTFKNVTYKHREKQKVDLSTDC

| | |
|-----------------------|---|
| Applications | Enzyme-linked Immunoabsorbent Assay Western Blot (Recombinant protein) Antibody Production Protein Array |
| Notes | Best use within three months from the date of receipt of this protein. |
| Storage | Store at -80 centigrade. Aliquot to avoid repeated freezing and thawing. |
| Storage Buffer | 50 mM Tris-HCl, 10 mM reduced Glutathione, pH=8.0 in the elution buffer. |

GENE INFORMATION

| | |
|------------------------|---|
| Gene Name | ITGB6 integrin, beta 6 [Homo sapiens] |
| Official Symbol | ITGB6 |
| Synonyms | ITGB6; integrin, beta 6; integrin beta-6; |
| Gene ID | 3694 |
| mRNA Refseq | NM_000888 |

 Tel: 1-631-559-9269 1-516-512-3133

 Email: info@creative-biomart.com  Fax: 1-631-938-8127

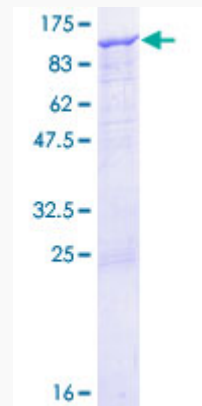
 45-1 Ramsey Road, Shirley, NY 11967, USA

Protein Refseq NP_000879

MIM 147558

UniProt ID P18564

**Quality Control
Testing**



12.5% SDS-PAGE Stained with Coomassie Blue

 Tel: 1-631-559-9269 1-516-512-3133

 Email: info@creative-biomart.com  Fax: 1-631-938-8127

 45-1 Ramsey Road, Shirley, NY 11967, USA