

Recombinant Human ITGB6 Protein, Myc/DDK-tagged, C13 and N15-labeled

Cat. No. ITGB6-507H Lot. No. (See product label)

SPECIFICATION

Product Overview

ITGB6 MS Standard C13 and N15-labeled recombinant protein (NP_000879) with a C-terminal MYC/DDK tag, was expressed in HEK293 cells.

Species

Human

Source

HEK293

Description

This gene encodes a protein that is a member of the integrin superfamily. Members of this family are adhesion receptors that function in signaling from the extracellular matrix to the cell. Integrins are heterodimeric integral membrane proteins composed of an alpha chain and a beta chain. The encoded protein forms a dimer with an alpha v chain and this heterodimer can bind to ligands like fibronectin and transforming growth factor beta 1. Alternate splicing results in multiple transcript variants.

Molecular Mass

85.8 kDa

AA Sequence

MGIELLCLFFFLGRNDHVQGGCALGGAETCEDCLLIGPQCAWCAQENFTHPSGVG
 ERCDTPANLLAKGCQLNFIENPVSQVEILKNKPLSVGRQKNSSDIVQIAPQSLILKLRP
 GGAQTLQVHVRQTEDYPVDLYYLMDSLASMDDLNTIKELGSRLSKEMSKLTSNFR
 LGFGSFVEKPVSPFVKTTPEEIANPCSSIPYFCLPTFGFKHILPLTND AERFNEIVKNQ
 KISANIDTPEGGFDAIMQAAVCKEKIGWRNDSLHLLVFVSDADSHFGMDSKLAGIVIP
 NDGLCHLDSKNEYSMSTVLEYPTIGQLIDKLVQNNVLLIFAVTQEQQVHLYENYAKLIP
 GATVGLLQKDSGNILQLIISAYEELRSEVELEVLGDTEGLNLSFTAICNNGTLFQHQQK

 Tel: 1-631-559-9269 1-516-512-3133

 Email: info@creative-biomart.com  Fax: 1-631-938-8127

 45-1 Ramsey Road, Shirley, NY 11967, USA

CSHMKVGD TASFSVTVNIPH CERRSRHIIKPVGLGDALELLVSPECNDCDCQKEVEV
 NSSKCHHGN SFGVCACHPGHMGRCECGEDMLSTDSCKEAPDHPSCSGRG
 DCYCGQCICHLSPYGN IGPYCQCDNFSCVRHKGLLCGGNGDCDCGECVCRSGW
 TGEYCNC TTSTDSCVSE DGVLCSGRGDCVCGKCVCTNPGASGPTCERCPTCGDP
 CNSKRSCIECHLSAAGQAREECVDKCKLAGATISEEEDFSKDGSVSCSLQGENECLI
 TFLITTDNEGKTIIHSINEKDCPKPPNIPMIMLGVSLAILLIGVVLLCIWKLLVSFHDRKE
 VAKFEAERSKAKWQTGTNPLYRGSTSTFKNVTYKHREKQKVDLSTDCTRTRPLEQK
 LISEEDLAANDILDYKDDDDKV

Purity	> 80% as determined by SDS-PAGE and Coomassie blue staining
Stability	Stable for 3 months from receipt of products under proper storage and handling conditions.
Storage	Store at -80 centigrade. Avoid repeated freeze-thaw cycles.
Concentration	50 µg/mL as determined by BCA
Storage Buffer	100 mM glycine, 25 mM Tris-HCl, pH 7.3.

GENE INFORMATION

Gene Name	ITGB6 integrin subunit beta 6 [Homo sapiens (human)]
Official Symbol	ITGB6
Synonyms	ITGB6; integrin subunit beta 6; AI1H; integrin beta-6; integrin, beta 6
Gene ID	3694
mRNA Refseq	NM_000888

 Tel: 1-631-559-9269 1-516-512-3133

 Email: info@creative-biomart.com  Fax: 1-631-938-8127

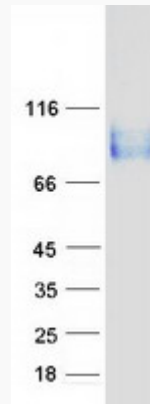
 45-1 Ramsey Road, Shirley, NY 11967, USA

Protein Refseq NP_000879

MIM 147558

UniProt ID P18564

SDS-PAGE



 Tel: 1-631-559-9269 1-516-512-3133

 Email: info@creative-biomart.com  Fax: 1-631-938-8127

 45-1 Ramsey Road, Shirley, NY 11967, USA