

## Recombinant Human ITGB6 protein, His-tagged

**Cat. No.** ITGB6-6454H    **Lot. No.** (See product label)

### SPECIFICATION

<b>Product Overview</b>	Recombinant Human ITGB6 protein(P18564-1)(Gly22-Asn707), fused with C-terminal His tag, was expressed in HEK293.
<b>Species</b>	Human
<b>Source</b>	HEK293
<b>ProteinLength</b>	Gly22-Asn707
<b>Tag</b>	C-His
<b>Form</b>	Supplied as 0.22µm filtered solution in PBS (pH 7.4).
<b>Molecular Mass</b>	The protein has a predicted MW of 75.4 kDa. Due to glycosylation, the protein migrates to 80-115 kDa based on Tris-Bis PAGE result.
<b>Endotoxin</b>	Less than 1EU per µg by the LAL method.
<b>Purity</b>	> 95% as determined by Tris-Bis PAGE; > 95% as determined by HPLC
<b>Storage</b>	Valid for 12 months from date of receipt when stored at -80°C; Recommend to aliquot the protein into smaller quantities for optimal storage. Please do not repeated freeze-thaw cycles.
<b>Reconstitution</b>	It is recommended that sterile water be added to the vial to prepare a stock solution of

 Tel: 1-631-559-9269    1-516-512-3133

 Email: [info@creative-biomart.com](mailto:info@creative-biomart.com)     Fax: 1-631-938-8127

 45-1 Ramsey Road, Shirley, NY 11967, USA

0.2 ug/ul. Centrifuge the vial at 4°C before opening to recover the entire contents.

## GENE INFORMATION

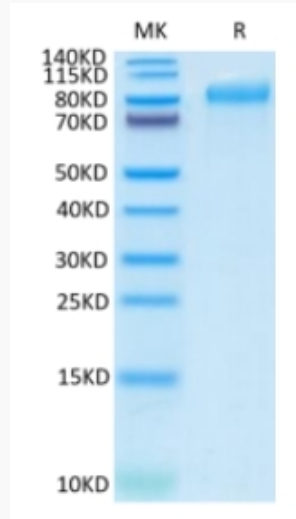
<b>Gene Name</b>	ITGB6 integrin, beta 6 [ Homo sapiens ]
<b>Official Symbol</b>	ITGB6
<b>Synonyms</b>	ITGB6; integrin, beta 6; integrin beta-6;
<b>Gene ID</b>	3694
<b>mRNA Refseq</b>	NM_000888
<b>Protein Refseq</b>	NP_000879
<b>MIM</b>	147558
<b>UniProt ID</b>	P18564

 Tel: 1-631-559-9269 1-516-512-3133

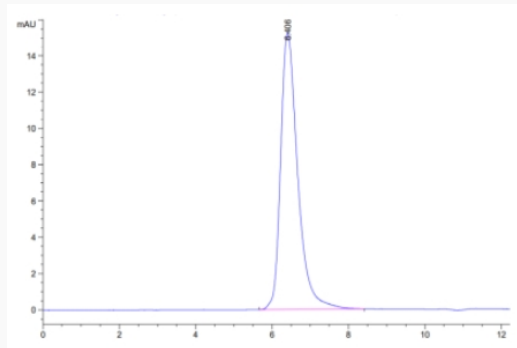
 Email: [info@creative-biomart.com](mailto:info@creative-biomart.com)  Fax: 1-631-938-8127

 45-1 Ramsey Road, Shirley, NY 11967, USA

**Tris-Bis PAGE**



**SEC-HPLC**



 Tel: 1-631-559-9269 1-516-512-3133

 Email: [info@creative-biomart.com](mailto:info@creative-biomart.com)  Fax: 1-631-938-8127

 45-1 Ramsey Road, Shirley, NY 11967, USA