

Recombinant Full Length Human ITGB7 Protein, C-Flag-tagged

Cat. No. ITGB7-1417HFL **Lot. No.** (See product label)

SPECIFICATION

Product Overview	Recombinant Full Length Human ITGB7 Protein, fused to Flag-tag at C-terminus, was expressed in Mammalian cells.
Species	Human
Source	Mammalian Cells
Description	<p>This gene encodes a protein that is a member of the integrin superfamily. Members of this family are adhesion receptors that function in signaling from the extracellular matrix to the cell. Integrins are heterodimeric integral membrane proteins composed of an alpha chain and a beta chain. The encoded protein forms dimers with an alpha4 chain or an alphaE chain and plays a role in leukocyte adhesion. Dimerization with alpha4 forms a homing receptor for migration of lymphocytes to the intestinal mucosa and Peyer's patches. Dimerization with alphaE permits binding to the ligand epithelial cadherin, a calcium-dependent adhesion molecule. Alternate splicing results in multiple transcript variants. Additional alternatively spliced transcript variants of this gene have been described, but their full-length nature is not known.</p>
Form	25 mM Tris HCl, pH 7.3, 100 mM glycine, 10% glycerol.
Molecular Mass	86.7 kDa
AA Sequence	<p>MVALPMVLVLLLVL SRGESELD AKIPSTGDATEWRNPHLSMLGSCQPAPSCQKCILS HPSCAWCKQLNFT ASGEAEARRCARREELLARGCPLEEELEPRGQQEVLQDQPLS QGARGEGATQLAPQRV RVTLRPGEPQQL QVRFLRAEGYPVDLYYLMDSLYSMKD</p>

 Tel: 1-631-559-9269 1-516-512-3133

 Email: info@creative-biomart.com  Fax: 1-631-938-8127

 45-1 Ramsey Road, Shirley, NY 11967, USA

DLERVRQLGHALLVRLQEVTHSVRIQFGSFVDKTVLPFVSTVPS KLRHPCPTRLERC
 QSPFSFHHVLSLTGDAQAFEREVGRQSVSGNLDSPEGGFDAALCQEQIGWRN
 V SROLLVFTSDDTFHTAGDGKLGIFMPDGHCHLDSNGLYSRSTEFDYPVSGQVA
 QALSAANIPIFAVTS AALPVYQELSKLIPKSAVGESESSNVVQLIMDAYNSLSST
 VTLEHSSLPPGVHISYESQCEGPEKREG KAEDRGQCNHVRINQTVTFWVSLQATH
 CLPEPHLLRLRALGFSEELIVELHTLDCDCNCSDTQPQAPHCSG GQGHLCQGVCSA
 PGRGLRGLCECSVAELSSPDLESGCRAPNGTGPLCSGKGCQCGRCSGQSSGH
 LCE CDDASCEHHEGILCGGFGRQCQGVCHCHANRTGRACECSGDMDSISP
 LCGHGRCKCNRCQCLDGY YGALCDQCPGCKTPCERHRDCAECGAFRTGPLATN
 CSTACAHTNVTALAPILDDGWCKERTLDNQLFFF LVEDDARGTVVLRVPRQEKGA
 DHTQAIVLGCVGGIVAVGLGLVLAIRLSVEIYDRREYSRFEKEQQQLNW
 KQDSNPLYKSAITTTINPRFQEADSPITLSGPTRTRPLEQKLISEEDLAANDILDYKDDD
 DKV

Purity > 80% as determined by SDS-PAGE and Coomassie blue staining.

Stability Stable for 12 months from the date of receipt of the product under proper storage and handling conditions. Avoid repeated freeze-thaw cycles.

Storage Store at -80 centigrade.

Concentration >50 ug/mL as determined by microplate BCA method.

Preparation Recombinant protein was captured through anti-DDK affinity column followed by conventional chromatography steps.

Protein Families Druggable Genome, Transmembrane

Protein Pathways Arrhythmogenic right ventricular cardiomyopathy (ARVC), Cell adhesion molecules (CAMs), Dilated cardiomyopathy, ECM-receptor interaction, Focal adhesion,

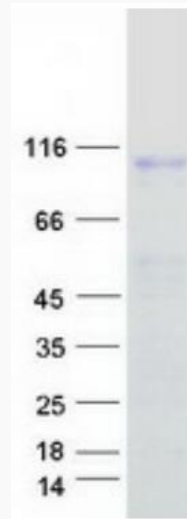
 Tel: 1-631-559-9269 1-516-512-3133

 Email: info@creative-biomart.com  Fax: 1-631-938-8127

 45-1 Ramsey Road, Shirley, NY 11967, USA

Hypertrophic cardiomyopathy (HCM), Regulation of actin cytoskeleton

Full Length Full L.**GENE INFORMATION****Gene Name** ITGB7 integrin subunit beta 7 [Homo sapiens (human)]**Official Symbol** ITGB7**Synonyms** integrin, beta 7; integrin beta 7 subunit**Gene ID** 3695**mRNA Refseq** NM_000889.3**Protein Refseq** NP_000880.1**MIM** 147559**UniProt ID** P26010 Tel: 1-631-559-9269 1-516-512-3133 Email: info@creative-biomart.com  Fax: 1-631-938-8127 45-1 Ramsey Road, Shirley, NY 11967, USA



Coomassie blue staining of purified ITGB7 protein.

 Tel: 1-631-559-9269 1-516-512-3133

 Email: info@creative-biomart.com  Fax: 1-631-938-8127

 45-1 Ramsey Road, Shirley, NY 11967, USA