

Recombinant Human ITGB7 Protein, Myc/DDK-tagged, C13 and N15-labeled

Cat. No. ITGB7-1587H **Lot. No.** (See product label)

SPECIFICATION

Product Overview	ITGB7 MS Standard C13 and N15-labeled recombinant protein (NP_000880) with a C-terminal MYC/DDK tag, was expressed in HEK293 cells.
Species	Human
Source	HEK293
Description	This gene encodes a protein that is a member of the integrin superfamily. Members of this family are adhesion receptors that function in signaling from the extracellular matrix to the cell. Integrins are heterodimeric integral membrane proteins composed of an alpha chain and a beta chain. The encoded protein forms dimers with an alpha4 chain or an alphaE chain and plays a role in leukocyte adhesion. Dimerization with alpha4 forms a homing receptor for migration of lymphocytes to the intestinal mucosa and Peyer's patches. Dimerization with alphaE permits binding to the ligand epithelial cadherin, a calcium-dependent adhesion molecule. Alternate splicing results in multiple transcript variants. Additional alternatively spliced transcript variants of this gene have been described, but their full-length nature is not known.
Molecular Mass	86.9 kDa
AA Sequence	MVALPMVLVLLLVL SRGESELD AKIPSTGDATEWRNPHLSMLGSCQPAPSCQKCILS HPSCAWCKQLNFTASGEAEARRCARREELLARGCPLEEELEPRGQQEVLQDQPLS QGARGEGATQLAPQVRVTLRPGEPQQLQVRFLRAEGYPVDLYLMDLSYSMKDD

 Tel: 1-631-559-9269 1-516-512-3133

 Email: info@creative-biomart.com  Fax: 1-631-938-8127

 45-1 Ramsey Road, Shirley, NY 11967, USA

LERVRQLGHALLVRLQEVTHSVRIGFGSFVDKTVLPFVSTVPSKLRHPCPTRLERCQ
 SPFSFHHVLSLTGDAQAFEREVGRQSVSGNLDSPGGFDAILQAALCQEIQGWRNV
 SRLLVFTSDDTFHTAGDGKLGIFMPDGHCHLDSNGLYSRSTEFDYPVSGQVAQA
 LSAANIQPIFAVTS AALPVYQELSKLIPKSAVGELSESSNVVQLIMDAYNSLSSTVTL
 EHSSLPPGVHISYESQCEGPEKREGKAEDRGQCNHVRINQTVTFWVSLQATHCLPE
 PHLLRLRALGFSEELIVELHTLDCNCSDTQPQAPHCSGQGHLCQGCVCSCAPGRL
 GRLCECSVAELSSPDLESGCRAPNGTGPLCSGKGHCQCGRCSGQSSGHLCEC
 DDASCRHEGILCGGFGRCQCGVCHCHANRTGRACECSGDMDCISPEGGGLCSG
 HGRCKNRCQCLDGYYGALCDQCPGCKTPCERHRDCAECGAFRTGPLATNCSTA
 CAHTNVTLALAPILDDGWCKERTLDNQLFFFLVEDDARGTVVLRVRPQEKGADHTQ
 AIVLGCVGGIVAVGLGLVLAYRLSVEIYDRREYSRFEKEQQQLNWKQDSNPLYKSAIT
 TTINPRFQEADSPTLSGPTRTRPLEQKLISEEDLAANDILDYKDDDDKV

Purity > 80% as determined by SDS-PAGE and Coomassie blue staining

Stability Stable for 3 months from receipt of products under proper storage and handling conditions.

Storage Store at -80 centigrade. Avoid repeated freeze-thaw cycles.

Concentration 50 µg/mL as determined by BCA

Storage Buffer 100 mM glycine, 25 mM Tris-HCl, pH 7.3.

GENE INFORMATION

Gene Name [ITGB7 integrin subunit beta 7 \[Homo sapiens \(human\) \]](#)

Official Symbol [ITGB7](#)

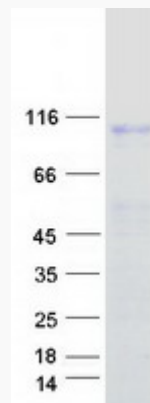
Synonyms ITGB7; integrin, beta 7; integrin beta-7; integrin beta 7 subunit; gut homing receptor

 Tel: 1-631-559-9269 1-516-512-3133

 Email: info@creative-biomart.com  Fax: 1-631-938-8127

 45-1 Ramsey Road, Shirley, NY 11967, USA

beta subunit;

Gene ID 3695**mRNA Refseq** NM_000889**Protein Refseq** NP_000880**MIM** 147559**UniProt ID** P26010**SDS-PAGE** Tel: 1-631-559-9269 1-516-512-3133 Email: info@creative-biomart.com  Fax: 1-631-938-8127 45-1 Ramsey Road, Shirley, NY 11967, USA