

Recombinant Human ITGB7 Protein (Met1-Leu798), C-MYC/DDK tagged

Cat. No. ITGB7-4330H **Lot. No.** (See product label)

SPECIFICATION

Product Overview	Recombinant human ITGB7 (Met1-Leu798) fused with the C-terminal MYC/DDK tag was expressed in Mammalian cells.
Species	Human
Source	Mammalian Cells
ProteinLength	Met1-Leu798
Description	<p>Integrin alpha E beta 7 consist of two major subunits: Integrin alpha E (ITGAE) also known as CD103 (cluster of differentiation 103) and Integrin beta-7 is an integrin protein that in humans is encoded by the ITGB7 gene. Integrin alpha E beta 7 (CD103) is expressed mainly by cells of the T lymphocyte lineage within mucosal tissues. This is a strikingly narrow pattern of expression compared with that of other integrins. Lymphocytes expressing alpha E beta 7 are abundant in the gut and comprise a major part of the total T cell complement of the body. The effectiveness of lung transplantation is marred by the relatively high incidence of rejection. The lung normally contains a large population of lymphocytes in contact with the airway epithelium, a proportion of which expresses the mucosal integrin, alpha (E) (CD103) beta (7) . This integrin is not a homing receptor, but is thought to retain lymphocytes at the epithelial surface.</p>
Form	Lyophilized powder/frozen liquid

 Tel: 1-631-559-9269 1-516-512-3133

 Email: info@creative-biomart.com  Fax: 1-631-938-8127

 45-1 Ramsey Road, Shirley, NY 11967, USA

Molecular Mass	87.78 kDa
Endotoxin	< 1.0 EU/μg of the protein as determined by the LAL method.
Purity	>90% as determined by SDS-PAGE.
Notes	For research use only.
Storage	Use a manual defrost freezer and avoid repeated freeze thaw cycles. Store at 2 to 8 centigrade for one week. Store at -20 to -80 centigrade for twelve months from the date of receipt.
Storage Buffer	Supplied as solution form in PBS or lyophilized from PBS.
Reconstitution	Reconstitute in sterile water for a stock solution.
Shipping	They are shipped out with dry ice/blue ice unless customers require otherwise.

GENE INFORMATION

Gene Name	ITGB7 integrin, beta 7 [Homo sapiens (human)]
Official Symbol	ITGB7
Synonyms	ITGB7; integrin, beta 7; integrin beta-7; integrin beta 7 subunit; gut homing receptor beta subunit;
Gene ID	3695
mRNA Refseq	NM_000889

 Tel: 1-631-559-9269 1-516-512-3133

 Email: info@creative-biomart.com  Fax: 1-631-938-8127

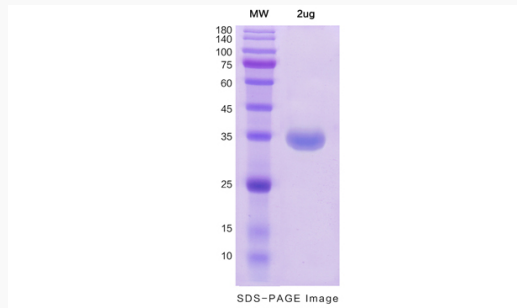
 45-1 Ramsey Road, Shirley, NY 11967, USA

Protein Refseq NP_000880

MIM 147559

UniProt ID P26010

SDS-PAGE



 Tel: 1-631-559-9269 1-516-512-3133

 Email: info@creative-biomart.com  Fax: 1-631-938-8127

 45-1 Ramsey Road, Shirley, NY 11967, USA