

Recombinant Human ITGB7 Protein, GST-tagged

Cat. No. ITGB7-4966H **Lot. No.** (See product label)

SPECIFICATION

Product Overview	Human ITGB7 full-length ORF (NP_000880.1, 1 a.a. - 798 a.a.) recombinant protein with GST-tag at N-terminal.
Species	Human
Source	Wheat Germ
Description	<p>This gene encodes a protein that is a member of the integrin superfamily. Members of this family are adhesion receptors that function in signaling from the extracellular matrix to the cell. Integrins are heterodimeric integral membrane proteins composed of an alpha chain and a beta chain. The encoded protein forms dimers with an alpha4 chain or an alphaE chain and plays a role in leukocyte adhesion. Dimerization with alpha4 forms a homing receptor for migration of lymphocytes to the intestinal mucosa and Peyer's patches. Dimerization with alphaE permits binding to the ligand epithelial cadherin, a calcium-dependent adhesion molecule. Alternate splicing results in multiple transcript variants. Additional alternatively spliced transcript variants of this gene have been described, but their full-length nature is not known. [provided by RefSeq, Sep 2013]</p>
Molecular Mass	113.3 kDa
AA Sequence	<p>MVALPMVLVLLLVL SRGESELD AKIPSTGDATEWRNPHLSMLGSCQPAPSCQKCILS HPSCAWCKQLNFTASGEAEARRCARREELLARGCPLEEL EEP R GQ QEV LQDQPLS QGARGEGATQLAPQRV R VTLRPGEPQQLQVRFLRAEGYPVDLYY LMDLSYSMKDD</p>

 Tel: 1-631-559-9269 1-516-512-3133

 Email: info@creative-biomart.com  Fax: 1-631-938-8127

 45-1 Ramsey Road, Shirley, NY 11967, USA

LERVRQLGHALLVRLQEVTHSVRIGFGSFVDKTVLPFVSTVPSKLRHPCPTRLERCQ
 SPFSFHHVLSLTGDAQAFEREVGRQSVSGNLDSPGGFDAILQAALCQEIQGWRNV
 SRLLVFTSDDTFHTAGDGKLGIFMPSDGHCHLDSNGLYSRSTEFDYPVSGQVAQA
 LSAANIQPIFAVTS AALPVYQELSKLIPKSAVGELSESSNVVQLIMDAYNSLSSTVTL
 EHSSLPPGVHISYESQCEGPEKREGKAEDRGQCNHVRINQTVTFWVSLQATHCLPE
 PHLLRLRALGFSEELIVELHTLDCNCSDTQPQAPHCSGQGHLCQGCVCSCAPGRL
 GRLCECSVAELSSPDLESGCRAPNGTGPLCSGKGGHCQCGRCSGQSSGHLCEC
 DDASCEHHEGILCGGFGRCQCGVCHCHANRTGRACECSGDMDCISPEGGGLCSG
 HGRCKCNRCQCLDGYYGALCDQCPCGCKTPCERHRDCAECGAFRTGPLATNCSTA
 CAHTNVTALAPILDDGWCKERTLDNQLFFFLVEDDARGTVVLRVRPQEKGADHTQ
 AIVLGCVGGIVAVGLGLVLAYRLSVEIYDRREYSRFEKEQQQLNWKQDSNPLYKSAIT
 TTINPRFQEADSPTL

Applications

Enzyme-linked Immunoabsorbent Assay
 Western Blot (Recombinant protein)
 Antibody Production
 Protein Array

Notes

Best use within three months from the date of receipt of this protein.

Storage

Store at -80 centigrade. Aliquot to avoid repeated freezing and thawing.

Storage Buffer

50 mM Tris-HCl, 10 mM reduced Glutathione, pH=8.0 in the elution buffer.

GENE INFORMATION

Gene Name

ITGB7 integrin, beta 7 [Homo sapiens]

Official Symbol

ITGB7

Synonyms

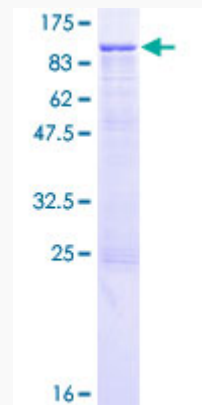
ITGB7; integrin, beta 7; integrin beta-7; integrin beta 7 subunit; gut homing receptor

 Tel: 1-631-559-9269 1-516-512-3133

 Email: info@creative-biomart.com  Fax: 1-631-938-8127

 45-1 Ramsey Road, Shirley, NY 11967, USA

beta subunit;

Gene ID 3695**mRNA Refseq** NM_000889**Protein Refseq** NP_000880**MIM** 147559**UniProt ID** P26010**Quality Control
Testing**

12.5% SDS-PAGE Stained with Coomassie Blue

 Tel: 1-631-559-9269 1-516-512-3133 Email: info@creative-biomart.com  Fax: 1-631-938-8127 45-1 Ramsey Road, Shirley, NY 11967, USA