

# Recombinant Human ITGBL1 Protein (Met1-Pro494), C-His tagged

Cat. No. ITGBL1-3301H    Lot. No. (See product label)

## SPECIFICATION

<b>Product Overview</b>	Recombinant human ITGBL1 (Met1-Pro494) protein fused with the C-His tag was expressed in E. coli.
<b>Species</b>	Human
<b>Source</b>	E.coli
<b>ProteinLength</b>	Met1-Pro494
<b>Molecular Mass</b>	54.37 kDa
<b>Purity</b>	>90 % as determined by SDS-PAGE.
<b>Notes</b>	For research use only.
<b>Storage</b>	Use a manual defrost freezer and avoid repeated freeze thaw cycles. Store at 2 to 8 centigrade for one week. Store at -20 to -80 centigrade for twelve months from the date of receipt.
<b>Storage Buffer</b>	0.01M PBS, pH 7.4, 0.02 % NLS
<b>Reconstitution</b>	Reconstitute in sterile water for a stock solution.
<b>Shipping</b>	In general, proteins are provided as lyophilized powder/frozen liquid. They are

 Tel: 1-631-559-9269    1-516-512-3133

 Email: [info@creative-biomart.com](mailto:info@creative-biomart.com)     Fax: 1-631-938-8127

 45-1 Ramsey Road, Shirley, NY 11967, USA

shipped out with dry ice/blue ice unless customers require otherwise.

## GENE INFORMATION

**Gene Name** ITGBL1 integrin, beta-like 1 (with EGF-like repeat domains) [ Homo sapiens (human) ]

**Official Symbol** ITGBL1

**Synonyms** ITGBL1; integrin, beta-like 1 (with EGF-like repeat domains); integrin beta-like protein 1; integrin beta like 1; OSCP; ten integrin EGF like repeat domains protein; TIED; osteoblast-specific cysteine-rich protein; ten integrin EGF-like repeat domains protein; ten integrin EGF-like repeat domain-containing protein;

**Gene ID** 9358

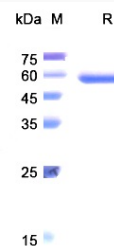
**mRNA Refseq** NM\_004791

**Protein Refseq** NP\_004782

**MIM** 604234

**UniProt ID** O95965

### SDS-PAGE



 Tel: 1-631-559-9269 1-516-512-3133

 Email: [info@creative-biomart.com](mailto:info@creative-biomart.com)  Fax: 1-631-938-8127

 45-1 Ramsey Road, Shirley, NY 11967, USA