

## Active Recombinant Human ITIH4 protein, His-tagged

Cat. No. ITIH4-4067H Lot. No. (See product label)

### SPECIFICATION

<b>Product Overview</b>	Active Recombinant Human ITIH4 protein(Q14624)(29-157 aa), fused with N-terminal His tag, was expressed in E.coli.
<b>Species</b>	Human
<b>Source</b>	E.coli
<b>ProteinLength</b>	29-157 aa
<b>Form</b>	PBS, pH7.4, containing 0.01% SKL, 1mM DTT, 5% Trehalose and Proclin300.
<b>Bio-activity</b>	<p>Inter Alpha-Globulin Inhibitor H4 (ITIH4) is secreted into the blood, where it is cleaved by plasma kallikrein into two smaller forms. ITIH4 has been detected only in liver, and it seems to be upregulated during surgical trauma. It may also play a role in liver development or regeneration. Besides, Tau Protein (MAPT) has been identified as an interactor of ITIH4, thus a binding ELISA assay was conducted to detect the interaction of recombinant human ITIH4 and recombinant human MAPT. Briefly, ITIH4 were diluted serially in PBS, with 0.01% BSA (pH 7.4). Duplicate samples of 100 ul were then transferred to MAPT-coated microtiter wells and incubated for 2h at 37°C. Wells were washed with PBST and incubated for 1h with anti-ITIH4 pAb, then aspirated and washed 3 times. After incubation with HRP labelled secondary antibody, wells were aspirated and washed 5 times. With the addition of substrate solution, wells were incubated 15-25 minutes at 37°C. Finally, add 50 μ stop solution to the wells and read at 450 nm immediately. The binding activity of ITIH4 and MAPT</p>

 Tel: 1-631-559-9269 1-516-512-3133

 Email: [info@creative-biomart.com](mailto:info@creative-biomart.com)  Fax: 1-631-938-8127

 45-1 Ramsey Road, Shirley, NY 11967, USA

was shown, the EC50 for this effect is 0.18 ug/mL.

**Molecular Mass** 15.5kDa

**Endotoxin** <1.0EU per 1µg (determined by the LAL method).

**Purity** > 97%

**Storage** Avoid repeated freeze/thaw cycles. Store at 2-8°C for one month. Store at -20°C for 12 months. Aliquot and store at -80°C for 12 months.

**Reconstitution** Reconstitute in 10mM PBS (pH7.4) to a concentration of 0.1-1.0 mg/mL. Do not vortex.

## GENE INFORMATION

**Gene Name** [ITIH4 inter-alpha-trypsin inhibitor heavy chain family, member 4 \[ Homo sapiens \]](#)

**Official Symbol** [ITIH4](#)

**Synonyms** ITIH4; inter-alpha-trypsin inhibitor heavy chain family, member 4; inter alpha (globulin) inhibitor H4 (plasma Kallikrein sensitive glycoprotein) , ITIHL1; inter-alpha-trypsin inhibitor heavy chain H4; H4P; IHRP; plasma Kallikrein sensitive glycoprotein; ITI heavy chain H4; inter-alpha-inhibitor heavy chain 4; plasma kallikrein-sensitive glycoprotein 120; inter-alpha-trypsin inhibitor, heavy chain-like, 1; inter-alpha-trypsin inhibitor family heavy chain-related protein; inter-alpha (globulin) inhibitor H4 (plasma Kallikrein-sensitive glycoprotein); GP120; PK120; ITIHL1; PK-120; ITI-HC4; DKFZp686G21125;

**Gene ID** [3700](#)

 Tel: 1-631-559-9269 1-516-512-3133

 Email: [info@creative-biomart.com](mailto:info@creative-biomart.com)  Fax: 1-631-938-8127

 45-1 Ramsey Road, Shirley, NY 11967, USA

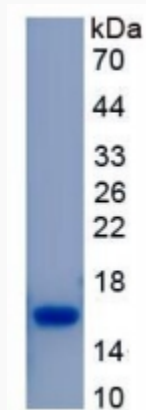
mRNA Refseq [NM\\_001166449](#)

Protein Refseq [NP\\_001159921](#)

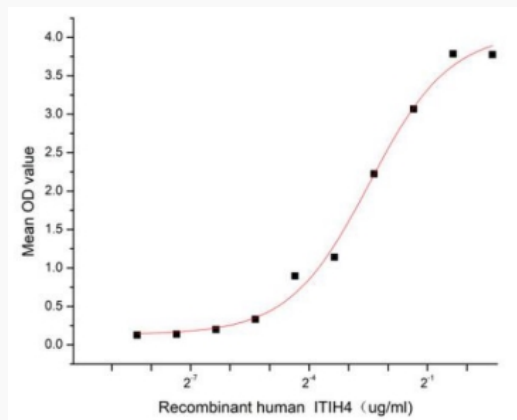
MIM [600564](#)

UniProt ID [Q14624](#)

#### SDS-PAGE



#### Activity



Tel: 1-631-559-9269 1-516-512-3133

Email: [info@creative-biomart.com](mailto:info@creative-biomart.com) Fax: 1-631-938-8127

45-1 Ramsey Road, Shirley, NY 11967, USA