

# Active Recombinant Full Length Human ITK Protein, DDK-tagged, Biotinylated

**Cat. No.** ITK-1241HF    **Lot. No.** (See product label)

## SPECIFICATION

**Product Overview** Full-length human ITK [2-620(end) amino acids of accession number NP\_005537.3] was expressed as N- terminal DYKDDDDK tagged, biotinylated protein (75 kDa) using baculovirus expression system. The protein was purified by using DYKDDDDK tag antibody agarose and activated with ATP. Activated protein was purified by using gel filtration.

**Species** Human

**Source** Sf21 Cells

**ProteinLength** 2-620(end)

**Form** 50 mM Tris-HCl, 150 mM NaCl, 0.05% Brij35, 1 mM DTT, 10% glycerol, pH7.5

**Bio-activity** The activity was measured by off-chip mobility shift assay(MSA). The enzyme was incubated with fluorescence-labeled substrate and Mg(or Mn)/ATP. The phosphorylated and unphosphorylated substrates were separated and detected by MSA device.


**Purity** 90%

**Applications** SDS-PAGE

**Storage** Store at -80C. Avoid repeating freeze-thaws.

 Tel: 1-631-559-9269    1-516-512-3133

 Email: [info@creative-biomart.com](mailto:info@creative-biomart.com)     Fax: 1-631-938-8127

 45-1 Ramsey Road, Shirley, NY 11967, USA

**Conjugation**                      Biotin

## GENE INFORMATION

**Gene Name**                      IL2-inducible T-cell kinase

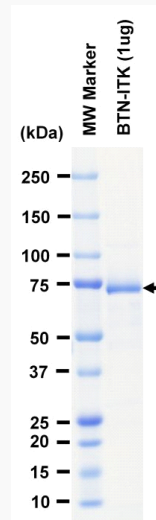
**Official Symbol**                ITK

**Synonyms**                      ITK;EMT;LPFS1;LYK;PSCTK2

**Protein Refseq**                [NP\\_005537.3](#)

**UniProt ID**                      [Q08881](#)

## SDS-PAGE



The purity was assessed by SDS-PAGE/CBB staining.

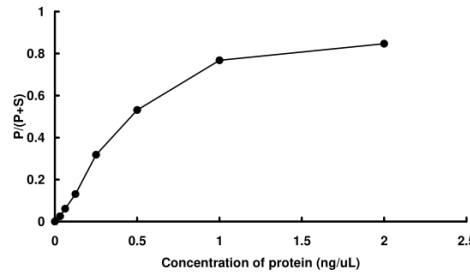
 Tel: 1-631-559-9269    1-516-512-3133

 Email: [info@creative-biomart.com](mailto:info@creative-biomart.com)     Fax: 1-631-938-8127

 45-1 Ramsey Road, Shirley, NY 11967, USA

Activity data

Activity data



The activity was measured by off-chip mobility shift assay(MSA). The enzyme was incubated with fluorescence-labeled substrate and Mg(or Mn)/ATP. The phosphorylated and unphosphorylated substrates were separated and detected by MSA device.

Tel: 1-631-559-9269 1-516-512-3133

Email: [info@creative-biomart.com](mailto:info@creative-biomart.com) Fax: 1-631-938-8127

45-1 Ramsey Road, Shirley, NY 11967, USA