

## Recombinant Human ITK Protein, GST-tagged

**Cat. No.** ITK-4960H    **Lot. No.** (See product label)

### SPECIFICATION

**Product Overview**      Human ITK full-length ORF ( AAI09078.1, 1 a.a. - 620 a.a.) recombinant protein with GST-tag at N-terminal.

**Species**                      Human

**Source**                        Wheat Germ

**Description**                This gene encodes an intracellular tyrosine kinase expressed in T-cells. The protein contains both SH2 and SH3 domains which are often found in intracellular kinases. It is thought to play a role in T-cell proliferation and differentiation. [provided by RefSeq]

**Molecular Mass**            98.2 kDa

**AA Sequence**

MNNFILLEEQLIKKSQQKRRTSPSNFKVRRFFVLTKASLAYFEDRHGKKRTLKGSIELS  
RIKCVEIVKSDISIPCHYKYPFQVVHDNYLLYVFAPDRESRQRWVLALKEETRNNNSL  
VPKYHPNFWMDGKWRCSSQLEKLATGCAQYDPTKNASKKPLPPTPEDNRRPLWE  
PEETVVIALYDYQTNDPQELALRRNEEYCLLDSSEIHWWRVQDRNGHEGYVPSSYL  
VEKSPNNLETYEWYNKSISRDKAEKLLLDTGKEGAFMVRDSRTAGTYTVSVFTKAVV  
SENNPCIKHYHIKETNDNPKRYYYVAEKYVFDSIPLLINYHQHNGGLVTRLRYPVCFG  
RQKAPVTAGLRYGKWVIDPSELTFVQEIGSGQFGLVHLGYWLNKDKVAIKTIREGAM  
SEEDFIEEAEVMMKLSHPKLVQLYGVCLQAPICLVFEFMEHGCLSDYLRTQRGLFA  
AETLLGMCLDVCEGMAYLEEACVIHRDLAARNCLVGENQVIKVSDFGMTRFVDDQ  
YTSSTGTFKFPVKWASPEVFSFSRYSSKSDVWSFGVLMWEVVFSEGGKIPYENRSNSEV  
VEDISTGFRLYKPRLASTHVYQIMNHCWKERPEDRPAFSRLLRQLAEIAESGL

 Tel: 1-631-559-9269    1-516-512-3133

 Email: [info@creative-biomart.com](mailto:info@creative-biomart.com)     Fax: 1-631-938-8127

 45-1 Ramsey Road, Shirley, NY 11967, USA

<b>Applications</b>	Enzyme-linked Immunoabsorbent Assay Western Blot (Recombinant protein) Antibody Production Protein Array
<b>Notes</b>	Best use within three months from the date of receipt of this protein.
<b>Storage</b>	Store at -80 centigrade. Aliquot to avoid repeated freezing and thawing.
<b>Storage Buffer</b>	50 mM Tris-HCl, 10 mM reduced Glutathione, pH=8.0 in the elution buffer.

## GENE INFORMATION

<b>Gene Name</b>	ITK IL2-inducible T-cell kinase [ Homo sapiens ]
<b>Official Symbol</b>	ITK
<b>Synonyms</b>	ITK; IL2-inducible T-cell kinase; tyrosine-protein kinase ITK/TSK; EMT; LYK; PSCTK2; kinase EMT; T-cell-specific kinase; tyrosine-protein kinase LYK; IL-2-inducible T cell kinase; IL-2-inducible T-cell kinase; homolog of mouse T-cell itk/tsk; interleukin-2-inducible T cell kinase; interleukin-2-inducible T-cell kinase; MGC126257; MGC126258;
<b>Gene ID</b>	3702
<b>mRNA Refseq</b>	NM_005546
<b>Protein Refseq</b>	NP_005537
<b>MIM</b>	186973

 Tel: 1-631-559-9269 1-516-512-3133

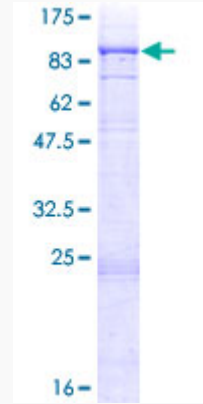
 Email: [info@creative-biomart.com](mailto:info@creative-biomart.com)  Fax: 1-631-938-8127

 45-1 Ramsey Road, Shirley, NY 11967, USA

UniProt ID

Q08881

Quality Control  
Testing



12.5% SDS-PAGE Stained with Coomassie Blue

 Tel: 1-631-559-9269 1-516-512-3133

 Email: [info@creative-biomart.com](mailto:info@creative-biomart.com)  Fax: 1-631-938-8127

 45-1 Ramsey Road, Shirley, NY 11967, USA