

## Recombinant Human ITLN1 Protein (Thr19-Ser298), N-His tagged

Cat. No. ITLN1-3558H Lot. No. (See product label)

### SPECIFICATION

<b>Product Overview</b>	Recombinant human ITLN1 (Thr19-Ser298) protein fused with the N-terminal His tag was expressed in E. coli.
<b>Species</b>	Human
<b>Source</b>	E.coli
<b>ProteinLength</b>	Thr19-Ser298
<b>Molecular Mass</b>	30.91 kDa
<b>Purity</b>	>90 % as determined by SDS-PAGE.
<b>Notes</b>	For research use only.
<b>Storage</b>	Use a manual defrost freezer and avoid repeated freeze thaw cycles. Store at 2 to 8 centigrade for one week. Store at -20 to -80 centigrade for twelve months from the date of receipt.
<b>Storage Buffer</b>	Supplied as solution form in PBS or lyophilized from PBS.
<b>Reconstitution</b>	Reconstitute in sterile water for a stock solution.
<b>Shipping</b>	In general, proteins are provided as lyophilized powder/frozen liquid. They are

 Tel: 1-631-559-9269 1-516-512-3133

 Email: [info@creative-biomart.com](mailto:info@creative-biomart.com)  Fax: 1-631-938-8127

 45-1 Ramsey Road, Shirley, NY 11967, USA

shipped out with dry ice/blue ice unless customers require otherwise.

## GENE INFORMATION

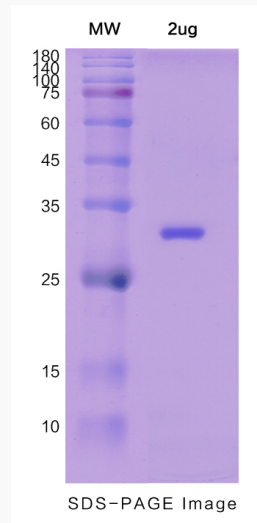
<b>Gene Name</b>	ITLN1 intelectin 1 (galactofuranose binding) [ Homo sapiens (human) ]
<b>Official Symbol</b>	ITLN1
<b>Synonyms</b>	ITLN1; intelectin 1 (galactofuranose binding); intelectin-1; FLJ20022; hIntL; HL 1; ITLN; LFR; ITLN-1; endothelial lectin HL-1; galactofuranose-binding lectin; intestinal lactoferrin receptor; HL1; HL-1; INTL; omentin;
<b>Gene ID</b>	55600
<b>mRNA Refseq</b>	NM_017625
<b>Protein Refseq</b>	NP_060095
<b>MIM</b>	609873
<b>UniProt ID</b>	Q8WWA0

 Tel: 1-631-559-9269 1-516-512-3133

 Email: [info@creative-biomart.com](mailto:info@creative-biomart.com)  Fax: 1-631-938-8127

 45-1 Ramsey Road, Shirley, NY 11967, USA

**SDS-PAGE**



 Tel: 1-631-559-9269 1-516-512-3133

 Email: [info@creative-biomart.com](mailto:info@creative-biomart.com)  Fax: 1-631-938-8127

 45-1 Ramsey Road, Shirley, NY 11967, USA