

Recombinant Human ITM2A Protein, His tagged

Cat. No. ITM2A-001H **Lot. No.** (See product label)

SPECIFICATION

Product Overview	Recombinant Human ITM2A Protein (80-263 aa) with His tag was expressed in E. coli.
Species	Human
Source	E.coli
ProteinLength	80-263 aa
Description	This gene encodes a type II membrane protein that belongs to the ITM2 family. Studies in mouse suggest that it may be involved in osteo- and chondrogenic differentiation. Alternatively spliced transcript variants encoding different isoforms have been found for this gene.
Molecular Mass	22 kDa
Purity	> 90% by SDS-PAGE
AA Sequence	MPKSTIYRGEMCFFDSEDPANSLRGGEPNFLPVTEEADIREDDNIAIIDVPVPSFSDS DPAAIHDFEKGMTAYLDLLLGNCYLMPLNTSIVMPPKNLVELFGKLAGRYLPQTYV VREDLVAVEEIRDVSNLGIIFYQLCNRKSFRLRRRDLGLGFKRAIDKCWKIRHFPN EFIVETKICQEHHHHHHHHH
Endotoxin	< 1.0 EU/μg by LAL

 Tel: 1-631-559-9269 1-516-512-3133

 Email: info@creative-biomart.com  Fax: 1-631-938-8127

 45-1 Ramsey Road, Shirley, NY 11967, USA

Storage	Store it under sterile conditions at -20 to -80 centigrade. It is recommended that the protein be aliquoted for optimal storage. Avoid repeated freeze-thaw cycles.
Storage Buffer	Sterile PBS, pH7.4, 8% Trehalose, 10% Glycerol
Concentration	1 mg/mL by BCA

GENE INFORMATION

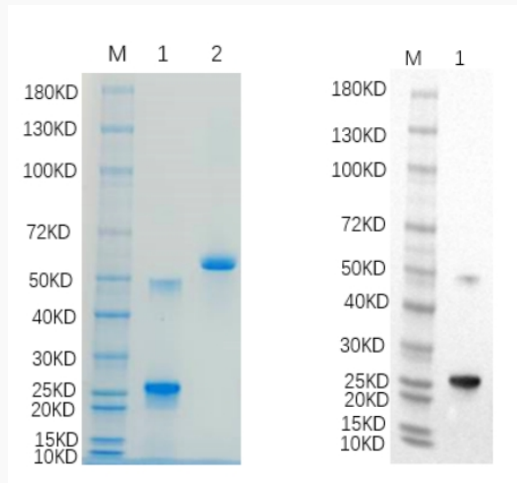
Gene Name	ITM2A integral membrane protein 2A [Homo sapiens (human)]
Official Symbol	ITM2A
Synonyms	ITM2A; integral membrane protein 2A; E25A; BRICD2A; integral membrane protein 2A; BRICHOS domain containing 2A
Gene ID	9452
mRNA Refseq	NM_004867
Protein Refseq	NP_004858
MIM	300222
UniProt ID	Q6IBC9

 Tel: 1-631-559-9269 1-516-512-3133

 Email: info@creative-biomart.com  Fax: 1-631-938-8127

 45-1 Ramsey Road, Shirley, NY 11967, USA

SDS-PAGE and WB



Reducing 4%-20% SDS-PAGE (CBB stained) and WB (Anti-His Mouse Monoclonal antibody) analysis profiles of purified ITM2A. 1. ITM2A: 1 µg 2. BSA: 1 µg

 Tel: 1-631-559-9269 1-516-512-3133

 Email: info@creative-biomart.com  Fax: 1-631-938-8127

 45-1 Ramsey Road, Shirley, NY 11967, USA