

Recombinant Human ITM2A Protein, GST-tagged

Cat. No. ITM2A-4955H **Lot. No.** (See product label)

SPECIFICATION

Product Overview	Human ITM2A full-length ORF (AAH40437, 1 a.a. - 263 a.a.) recombinant protein with GST-tag at N-terminal.
Species	Human
Source	Wheat Germ
Description	This gene encodes a type II membrane protein that belongs to the ITM2 family. Studies in mouse suggest that it may be involved in osteo- and chondrogenic differentiation. Alternatively spliced transcript variants encoding different isoforms have been found for this gene. [provided by RefSeq, Jan 2010]
Molecular Mass	54.45 kDa
AA Sequence	MVKIAFNTPTAVQKEEARQDVEALLSRTVRTQILTGKELRVATQEKEGSSGRCMLTL LGLSFILAGLIVGGACIYKYFMPKSTIYRGEMCFFDSEDPANSLRGGEPNFLPVTEEA DIREDDNIAIIDVPVPSFSDSDPAIIHDFEKGMTAYLDLLGNCYLMPLNTSIVMPPKN LVELFGKLASGRYLPQTYVVREDLVAVEEIRDVSNLGIYQLCNRKSFRLRRRDLL LGFNKRAIDKCWKIRHFPNEFIVETKICQE
Applications	Enzyme-linked Immunoabsorbent Assay Western Blot (Recombinant protein) Antibody Production Protein Array

 Tel: 1-631-559-9269 1-516-512-3133

 Email: info@creative-biomart.com  Fax: 1-631-938-8127

 45-1 Ramsey Road, Shirley, NY 11967, USA

Notes	Best use within three months from the date of receipt of this protein.
Storage	Store at -80 centigrade. Aliquot to avoid repeated freezing and thawing.
Storage Buffer	50 mM Tris-HCl, 10 mM reduced Glutathione, pH=8.0 in the elution buffer.

GENE INFORMATION

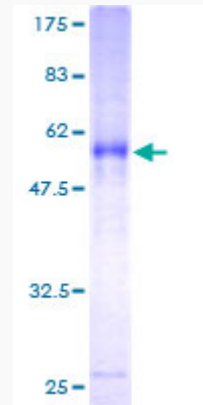
Gene Name	ITM2A integral membrane protein 2A [Homo sapiens (human)]
Official Symbol	ITM2A
Synonyms	ITM2A; integral membrane protein 2A; E25A; BRICD2A; integral membrane protein 2A; BRICHOS domain containing 2A
Gene ID	9452
mRNA Refseq	NM_001171581
Protein Refseq	NP_001165052
MIM	300222
UniProt ID	O43736

 Tel: 1-631-559-9269 1-516-512-3133

 Email: info@creative-biomart.com  Fax: 1-631-938-8127

 45-1 Ramsey Road, Shirley, NY 11967, USA

**Quality Control
Testing**



12.5% SDS-PAGE Stained with Coomassie Blue

 Tel: 1-631-559-9269 1-516-512-3133

 Email: info@creative-biomart.com  Fax: 1-631-938-8127

 45-1 Ramsey Road, Shirley, NY 11967, USA