

Recombinant Mouse ITM2B Protein, His-tagged

Cat. No. ITM2B-65M **Lot. No.** (See product label)

SPECIFICATION

Product Overview	Recombinant Mouse ITM2B Protein, fused to His-tag, was expressed in HEK293.
Species	Mouse
Source	HEK293
Description	Enables ATP binding activity. Acts upstream of or within extrinsic apoptotic signaling pathway in absence of ligand. Predicted to be located in Golgi-associated vesicle membrane and extracellular space. Predicted to be integral component of organelle membrane. Predicted to be active in Golgi apparatus and plasma membrane. Is expressed in central nervous system; pancreas epithelium; and retina. Used to study cerebral amyloid angiopathy. Human ortholog(s) of this gene implicated in ITM2B-related cerebral amyloid angiopathy 1 and ITM2B-related cerebral amyloid angiopathy 2. Orthologous to human ITM2B (integral membrane protein 2B).
Form	Supplied as a 0.2 µm filtered solution in PBS , pH7.4.
Molecular Mass	~24.9 kDa
AA Sequence	MHSSALLCCLVLLTGVRAYKYFALQPDDVYYCGLKYIKDDVILNEPSADAPAARYQTI EENIKIFEEDAVEFISVPVPEFADSDPANIVHDFNKKLTAYLDLNLDKCYVIPLNTSIVM PPKNLLELLINIKAGTYLPQSYLIHEHMVITDRIENVNDNLGFFIYRLCHDKETYKLQRRE TIRGIQKREASNCFTIRHFENKFAVETLICSHHHHHH
Purity	>90%

 Tel: 1-631-559-9269 1-516-512-3133

 Email: info@creative-biomart.com  Fax: 1-631-938-8127

 45-1 Ramsey Road, Shirley, NY 11967, USA

Storage	Store it under sterile conditions at -20 to -80 centigrade. It is recommended that the protein be aliquoted for optimal storage. Avoid repeated freeze-thaw cycles.
----------------	---

Concentration	0.1 mg/mL
----------------------	-----------

GENE INFORMATION

Gene Name	<i>Itm2b</i> integral membrane protein 2B [<i>Mus musculus</i> (house mouse)]
------------------	---

Official Symbol	ITM2B
------------------------	-------

Synonyms	Bri; Bri2; E25BMM; imBRI2; Bricd2b; D14Sel6; AI256040
-----------------	---

Gene ID	16432
----------------	-------

mRNA Refseq	NM_008410
--------------------	-----------

Protein Refseq	NP_032436
-----------------------	-----------

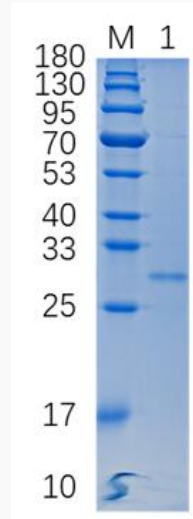
UniProt ID	O89051
-------------------	--------

 Tel: 1-631-559-9269 1-516-512-3133

 Email: info@creative-biomart.com  Fax: 1-631-938-8127

 45-1 Ramsey Road, Shirley, NY 11967, USA

SDS-PAGE



12% reducing SDS-PAGE analysis of purified ITM2B (approximately 1 mg protein loaded).

 Tel: 1-631-559-9269 1-516-512-3133

 Email: info@creative-biomart.com  Fax: 1-631-938-8127

 45-1 Ramsey Road, Shirley, NY 11967, USA