

Recombinant Human ITM2C Protein, Myc/DDK-tagged, C13 and N15-labeled

Cat. No. ITM2C-2959H **Lot. No.** (See product label)

SPECIFICATION

Product Overview	ITM2C MS Standard C13 and N15-labeled recombinant protein (NP_001012532) with a C-terminal MYC/DDK tag, was expressed in HEK293 cells.
Species	Human
Source	HEK293
Description	Negative regulator of amyloid-beta peptide production. May inhibit the processing of APP by blocking its access to alpha- and beta-secretase. Binding to the beta-secretase-cleaved APP C-terminal fragment is negligible, suggesting that ITM2C is a poor gamma-secretase cleavage inhibitor. May play a role in TNF-induced cell death and neuronal differentiation.
Molecular Mass	25 kDa
AA Sequence	MVKISFQPAVAGIKGDKADKASAPAPASATEILLTPARLARDNFFRCGVLYEDSLS SQVRTQMELEEDVKIYLDENYERINVPVPQFGGGDPADIIHDFQRGLTAYHDISLDKC YVIELNTTIVLPPRNFWELLMNVKRGTYLPQTYIIQEEMVVTEHVSDKEALGFSFIYHLC NGKDTYRLRRRATRRRINKRGAKNCNAIRHFENTFVVETLICGVVTRTRPLEQKLISE EDLAANDILDYKDDDDKV
Purity	> 80% as determined by SDS-PAGE and Coomassie blue staining
Stability	Stable for 3 months from receipt of products under proper storage and handling

 Tel: 1-631-559-9269 1-516-512-3133

 Email: info@creative-biomart.com  Fax: 1-631-938-8127

 45-1 Ramsey Road, Shirley, NY 11967, USA

conditions.

Storage Store at -80 centigrade. Avoid repeated freeze-thaw cycles.

Concentration 50 µg/mL as determined by BCA

Storage Buffer 100 mM glycine, 25 mM Tris-HCl, pH 7.3.

GENE INFORMATION

Gene Name ITM2C integral membrane protein 2C [Homo sapiens (human)]

Official Symbol ITM2C

Synonyms ITM2C; integral membrane protein 2C; BRI3; E25; hRPC.1050_D_4; ITM3; E25C; HRPC.1050_D_4;

Gene ID 81618

mRNA Refseq NM_001012514

Protein Refseq NP_001012532

MIM 609554

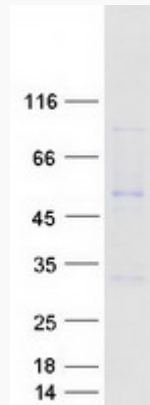
UniProt ID Q9NQX7

 Tel: 1-631-559-9269 1-516-512-3133

 Email: info@creative-biomart.com  Fax: 1-631-938-8127

 45-1 Ramsey Road, Shirley, NY 11967, USA

SDS-PAGE



 Tel: 1-631-559-9269 1-516-512-3133

 Email: info@creative-biomart.com  Fax: 1-631-938-8127

 45-1 Ramsey Road, Shirley, NY 11967, USA