

Recombinant Human ITPA Protein (Ala2-Ala194), C-His tagged

Cat. No. ITPA-3651H Lot. No. (See product label)

SPECIFICATION

| | |
|-------------------------|---|
| Product Overview | Recombinant human ITPA (Ala2-Ala194) protein fused with the C-terminal His tag was expressed in E. coli. |
| Species | Human |
| Source | E.coli |
| ProteinLength | Ala2-Ala194 |
| Molecular Mass | 21.23 kDa |
| Purity | >90 % as determined by SDS-PAGE. |
| Notes | For research use only. |
| Storage | Use a manual defrost freezer and avoid repeated freeze thaw cycles. Store at 2 to 8 centigrade for one week. Store at -20 to -80 centigrade for twelve months from the date of receipt. |
| Storage Buffer | Supplied as solution form in PBS or lyophilized from PBS. |
| Reconstitution | Reconstitute in sterile water for a stock solution. |
| Shipping | In general, proteins are provided as lyophilized powder/frozen liquid. They are shipped out with dry ice/blue ice unless customers require otherwise. |

 Tel: 1-631-559-9269 1-516-512-3133

 Email: info@creative-biomart.com  Fax: 1-631-938-8127

 45-1 Ramsey Road, Shirley, NY 11967, USA

GENE INFORMATION

Gene Name ITPA inosine triphosphatase (nucleoside triphosphate pyrophosphatase) [Homo sapiens (human)]

Official Symbol ITPA

Synonyms ITPA; inosine triphosphatase (nucleoside triphosphate pyrophosphatase); C20orf37; inosine triphosphate pyrophosphatase; dJ794I6.3; HLC14 06 P; NTPase; My049 protein; inosine triphosphatase-A; putative oncogene protein HLC14-06-P; nucleoside triphosphate diphosphatase; nucleoside-triphosphate diphosphatase; non-standard purine NTP pyrophosphatase; nucleoside-triphosphate pyrophosphatase; non-canonical purine NTP pyrophosphatase; inosine triphosphate pyrophosphohydrolase; ITPase; HLC14-06-P;

Gene ID 3704

mRNA Refseq NM_033453

Protein Refseq NP_258412

MIM 147520

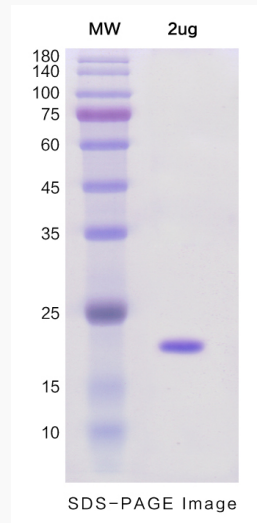
UniProt ID Q9BY32

 Tel: 1-631-559-9269 1-516-512-3133

 Email: info@creative-biomart.com  Fax: 1-631-938-8127

 45-1 Ramsey Road, Shirley, NY 11967, USA

SDS-PAGE



 Tel: 1-631-559-9269 1-516-512-3133

 Email: info@creative-biomart.com  Fax: 1-631-938-8127

 45-1 Ramsey Road, Shirley, NY 11967, USA