

Recombinant Human ITPK1 Protein, Myc/DDK-tagged, C13 and N15-labeled

Cat. No. ITPK1-3757H **Lot. No.** (See product label)

SPECIFICATION

Product Overview	ITPK1 MS Standard C13 and N15-labeled recombinant protein (NP_001136065) with a C-terminal MYC/DDK tag, was expressed in HEK293 cells.
Species	Human
Source	HEK293
Description	This gene encodes an enzyme that belongs to the inositol 1,3,4-trisphosphate 5/6-kinase family. This enzyme regulates the synthesis of inositol tetrakisphosphate, and downstream products, inositol pentakisphosphate and inositol hexakisphosphate. Inositol metabolism plays a role in the development of the neural tube. Disruptions in this gene are thought to be associated with neural tube defects. A pseudogene of this gene has been identified on chromosome X.
Molecular Mass	45.6 kDa
AA Sequence	<p>MQTFLKGKRVGYWLSEKKIKKLNFAFAELCRKRGMEVVQLNLSRPIEEQGPLDVII HKLTDVILEADQNDSQSLELVHRFQEYIDAHPETIVLDPLPAIRTLDRSKSYELIRKIE AYMEDDRICSPPFMELTSFCGDDTMRLLKNGLTFFICKTRVAHGTNSHEMAIVFN QEGLNAIQPPCVVQNFHNAVLYKVFVVGESYTVVQRPSLKNFSAGTSDRESIFFN SHNVSKPESSSVLTELDKIEGVFERPSDEVIRELSRALRQALGVSLFGIDIINNQTGQ HAVIDINAFPGYEGVSEFFTDLLNHIATVLQGGQSTAMAATGDVALLRHSKLLAEPAGG LVGERTCSASPGCCGSMGQDAPWKAEADAGGTAKLPHQRLGCNAGVSPSFQQ</p>

 Tel: 1-631-559-9269 1-516-512-3133

 Email: info@creative-biomart.com  Fax: 1-631-938-8127

 45-1 Ramsey Road, Shirley, NY 11967, USA

HCVASLATKASSQTRTRPLEQKLISEEDLAANDILDYKDDDDKV

Purity > 80% as determined by SDS-PAGE and Coomassie blue staining

Stability Stable for 3 months from receipt of products under proper storage and handling conditions.

Storage Store at -80 centigrade. Avoid repeated freeze-thaw cycles.

Concentration 50 µg/mL as determined by BCA

Storage Buffer 100 mM glycine, 25 mM Tris-HCl, pH 7.3.

GENE INFORMATION

Gene Name ITPK1 inositol-tetrakisphosphate 1-kinase [[Homo sapiens \(human\)](#)]

Official Symbol [ITPK1](#)

Synonyms ITPK1; inositol-tetrakisphosphate 1-kinase; inositol 1,3,4 triphosphate 5/6 kinase; ins(1,3,4)P(3) 5/6-kinase; inositol-triphosphate 5/6-kinase; inositol 1,3,4-triphosphate 5/6 kinase; inositol 1,3,4-trisphosphate 5/6 kinase; inositol 1,3,4-trisphosphate 5/6-kinase; ITRPK1;

Gene ID [3705](#)

mRNA Refseq [NM_001142593](#)

Protein Refseq [NP_001136065](#)

MIM [601838](#)

 Tel: 1-631-559-9269 1-516-512-3133

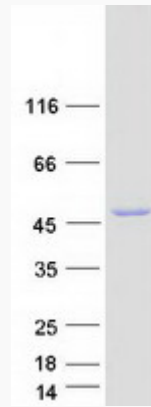
 Email: info@creative-biomart.com  Fax: 1-631-938-8127

 45-1 Ramsey Road, Shirley, NY 11967, USA

UniProt ID

Q13572

SDS-PAGE



 Tel: 1-631-559-9269 1-516-512-3133

 Email: info@creative-biomart.com  Fax: 1-631-938-8127

 45-1 Ramsey Road, Shirley, NY 11967, USA