

# Recombinant Full Length Human ITPKA Protein, C-Flag-tagged

Cat. No. ITPKA-1222HFL Lot. No. (See product label)

## SPECIFICATION

<b>Product Overview</b>	Recombinant Full Length Human ITPKA Protein, fused to Flag-tag at C-terminus, was expressed in Mammalian cells.
<b>Species</b>	Human
<b>Source</b>	Mammalian Cells
<b>Description</b>	Regulates inositol phosphate metabolism by phosphorylation of second messenger inositol 1,4,5-trisphosphate to Ins(1,3,4,5)P <sub>4</sub> . The activity of the inositol 1,4,5-trisphosphate 3-kinase is responsible for regulating the levels of a large number of inositol polyphosphates that are important in cellular signaling. Both calcium/calmodulin and protein phosphorylation mechanisms control its activity. It is also a substrate for the cyclic AMP-dependent protein kinase, calcium/calmodulin-dependent protein kinase II, and protein kinase C in vitro.
<b>Form</b>	25 mM Tris HCl, pH 7.3, 100 mM glycine, 10% glycerol.
<b>Molecular Mass</b>	50.8 kDa
<b>AA Sequence</b>	MTLPGGPTGMARPGGARPCSPGLERAPRRSVGELRLLFEARCAAVAAAAAAGEPR ARGAKRRGGQVPNGL QRAPPAPVIPQLTVAEEPDPPTSPGPPERERDCLPAAG SSHLQQPRRLSTSSVSSTGSSSLLLEDSEDD LLSDSESRSRGNVQLEAGEDVGQKN HWQKIRTMVNLPVISPFKKRYAWVQLAGHTGSFKAAGTSGLILKR CSEPERYCLAR LMADALRGCVPAFHGVVERDGESYLQLQDLLDGFDPVLDCKMGVRTYLEEELT KARE RPKLRKDMYKMLAVDPEAPTEEEHAQRAVTKPRYMQWREGISSSTTLGFRI

 Tel: 1-631-559-9269 1-516-512-3133

 Email: [info@creative-biomart.com](mailto:info@creative-biomart.com)  Fax: 1-631-938-8127

 45-1 Ramsey Road, Shirley, NY 11967, USA

EGIKKADGSCSTDFKTR SREQVLRVFEEFVQGDEEVLRRYLNRLQQIRDTEVSEF  
 FRRHEVIGSSLLFVHDHCHRAGVWLIDFGKT  
 TPLPDGQILDHRRPWEEGNREDGYLLGLDNLIGILASLAERTRTRPLEQKLISEEDLA  
 ANDILDYKDDDDKV

<b>Purity</b>	> 80% as determined by SDS-PAGE and Coomassie blue staining.
<b>Stability</b>	Stable for 12 months from the date of receipt of the product under proper storage and handling conditions. Avoid repeated freeze-thaw cycles.
<b>Storage</b>	Store at -80 centigrade.
<b>Concentration</b>	>50 ug/mL as determined by microplate BCA method.
<b>Preparation</b>	Recombinant protein was captured through anti-DDK affinity column followed by conventional chromatography steps.
<b>Protein Families</b>	Druggable Genome
<b>Protein Pathways</b>	Calcium signaling pathway, Inositol phosphate metabolism, Metabolic pathways, Phosphatidylinositol signaling system
<b>Full Length</b>	Full L.

## GENE INFORMATION

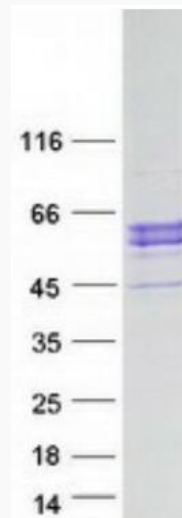
<b>Gene Name</b>	ITPKA inositol-trisphosphate 3-kinase A [ Homo sapiens (human) ]
<b>Official Symbol</b>	ITPKA
<b>Synonyms</b>	IP3KA; IP3-3KA

 Tel: 1-631-559-9269 1-516-512-3133

 Email: [info@creative-biomart.com](mailto:info@creative-biomart.com)  Fax: 1-631-938-8127

 45-1 Ramsey Road, Shirley, NY 11967, USA

Gene ID	3706
mRNA Refseq	NM_002220.3
Protein Refseq	NP_002211.1
MIM	147521
UniProt ID	P23677



Coomassie blue staining of purified ITPKA protein.

Tel: 1-631-559-9269 1-516-512-3133

Email: [info@creative-biomart.com](mailto:info@creative-biomart.com) Fax: 1-631-938-8127

45-1 Ramsey Road, Shirley, NY 11967, USA