

Recombinant Human ITPKA protein, GST-tagged

Cat. No. ITPKA-190H Lot. No. (See product label)

SPECIFICATION

Product Overview	Recombinant Human ITPKA protein(141-461 aa), fused with N-terminal GST tag, was expressed in E.coli.
Species	Human
Source	E.coli
ProteinLength	141-461 aa
Form	The purified protein was lyophilized from sterile phosphate-buffered saline (PBS: 58 mM Na ₂ HPO ₄ , 17 mM NaH ₂ PO ₄ , 68 mM NaCl, pH 8.0). Prior to lyophilization, 5% (w/v) trehalose and 5% (w/v) mannitol were incorporated as cryoprotective excipients. The protein was eluted with a buffer containing 100 mM reduced glutathione (GSH).
AASequence	LLSDSESRSRGNVQLEAGEDVGQKNHWQKIRTMVNLPVISPFKKRYAWVQLAGHT GSFKAAGTSGILKRCSEPERYCLARLMADALRGCVPAFHGVVERDGESYLQLQDL LDGFDGPCVLDCKMGVRTYLEEELTKARERPCLRKDMYKMLAVDPEAPTEEEHA QRAVTKPRYMQWREGISSSTTLGFRIEGIKKADGSCSTDFKTTRSREQVLRVFEEFV QGDEEVLRRYLNRLQQIRDTELVSEFFRRHEVIGSSLLFVHDHCHRAGVWLIDFGKT TPLPDGQILDHRRPWEEGNREDGYLLGLDNLIGILASLAER
Purity	85%, by SDS-PAGE with Coomassie Brilliant Blue staining.
Storage	Store at 2-8°C for 1-2 weeks. Aliquot and store at -20°C to -80°C for up to 3 months,

 Tel: 1-631-559-9269 1-516-512-3133

 Email: info@creative-biomart.com  Fax: 1-631-938-8127

 45-1 Ramsey Road, Shirley, NY 11967, USA

reconstitution with sterile water and addition of an equal volume of glycerol. Avoid repeat freeze-thaw cycles.

Reconstitution

Dissolve the product in 200 µl sterile water to achieve a working concentration of 0.25 g/µl. If experimental compatibility allows, mix the aqueous solution with an equal volume of glycerol (1:1 ratio) after initial reconstitution.

GENE INFORMATION

Gene Name [ITPKA inositol-trisphosphate 3-kinase A \[Homo sapiens \]](#)

Official Symbol [ITPKA](#)

Synonyms ITPKA; inositol-trisphosphate 3-kinase A; inositol 1,4,5 trisphosphate 3 kinase A; IP3 3KA; IP3KA; IP3K A; IP3 3-kinase A; insP 3-kinase A; inositol 1,4,5-trisphosphate 3-kinase A; IP3-3KA;

Gene ID [3706](#)

mRNA Refseq [NM_002220](#)

Protein Refseq [NP_002211](#)

MIM [147521](#)

UniProt ID [P23677](#)

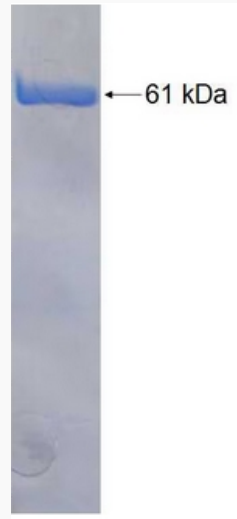
 Tel: 1-631-559-9269 1-516-512-3133

 Email: info@creative-biomart.com  Fax: 1-631-938-8127

 45-1 Ramsey Road, Shirley, NY 11967, USA



SDS-PAGE



☎ Tel: 1-631-559-9269 1-516-512-3133

☎ Email: info@creative-biomart.com ☎ Fax: 1-631-938-8127

☎ 45-1 Ramsey Road, Shirley, NY 11967, USA