

Recombinant Human ITPKB Protein (442-946 aa), His-SUMO-tagged

Cat. No. ITPKB-591H **Lot. No.** (See product label)

SPECIFICATION

Product Overview Recombinant Human ITPKB Protein (442-946 aa) is produced by E. coli expression system. This protein is fused with a 6xHis-SUMO tag at the N-terminal. Research Area: Signal Transduction. Protein Description: Full Length of Mature Protein.

Species Human

Source E.coli

ProteinLength 442-946 aa

Form Tris-based buffer, 50% glycerol

Molecular Mass 72.5 kDa

AA Sequence

```

RVEGGSPTLGLLGGSPSAQPGTGNVEAGIPSGRMLEPLPCWDAAKDLKEPQCPPG
DRVGVQPGNSRVWQGTMEKAGLAWTRGTGVQSEG TWESQRQDSDALPPELLP
QDPDKPFLRKACSPSNIPAVIITDMGTQEDGALEETQGS PRGNLPLRKLSSSSASST
GFSSSYEDSEEDISSDPERTLDPNSAFLHTLDQQKPRVSKSWRKIKNMVHWSPFVM
SFKKKYPIWQLAGHAGSFKAAANGRILKKHCESEQRCLDRMLVDVLRPFV PAYHGD
VVKDGERYNQMDDLADFDSPCVMDCKMGIRTYLEEELTKARKKPSLRKDMYQKMI
EVDPEAPTEEEKAQRAVTKPRYMQWRETISSTATLGFRIEGIKKEDGTVNRDFK KTK
TREQVTEAFREFTKGNHNILAIYRDRLKAIRTTLEVSPFFKCHEVIGSSLLFIHDKKEQ
AKVWMIDFGKTTPLPEGQTLQHDPVWQEGNREDGYLSGLNNLVDILTEMSQDAPLA
    
```

 Tel: 1-631-559-9269 1-516-512-3133

 Email: info@creative-biomart.com  Fax: 1-631-938-8127

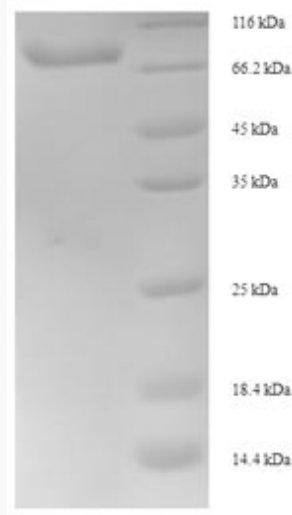
 45-1 Ramsey Road, Shirley, NY 11967, USA

Purity	> 90% as determined by SDS-PAGE.
Notes	Repeated freezing and thawing is not recommended. Store working aliquots at 4 centigrade for up to one week.
Storage	The shelf life is related to many factors, storage state, buffer ingredients, storage temperature and the stability of the protein itself. Generally, the shelf life of liquid form is 6 months at -20 centigrade/-80 centigrade. The shelf life of lyophilized form is 12 months at -20 centigrade/-80 centigrade.
Concentration	A hardcopy of COA with concentration instruction is sent along with the products.
GENE INFORMATION	
Gene Name	ITPKB inositol-trisphosphate 3-kinase B [Homo sapiens]
Official Symbol	ITPKB
Synonyms	ITPKB; IP3 3KB; IP3KB; IP3K B; IP3K; PIG37; IP3K-B; IP3-3KB;
Gene ID	3707
mRNA Refseq	NM_002221
Protein Refseq	NP_002212
MIM	147522
UniProt ID	P27987

 Tel: 1-631-559-9269 1-516-512-3133

 Email: info@creative-biomart.com  Fax: 1-631-938-8127

 45-1 Ramsey Road, Shirley, NY 11967, USA



(Tris-Glycine gel) Discontinuous SDS-PAGE (reduced) with 5% enrichment gel and 15% separation gel.

Tel: 1-631-559-9269 1-516-512-3133

Email: info@creative-biomart.com Fax: 1-631-938-8127

45-1 Ramsey Road, Shirley, NY 11967, USA