

Recombinant Full Length Human ITPKC Protein, C-Flag-tagged

Cat. No. ITPKC-1791HFL Lot. No. (See product label)

SPECIFICATION

| | |
|-------------------------|--|
| Product Overview | Recombinant Full Length Human ITPKC Protein, fused to Flag-tag at C-terminus, was expressed in Mammalian cells. |
| Species | Human |
| Source | Mammalian Cells |
| Description | This gene encodes a member of the inositol 1,4,5-trisphosphate [Ins(1,4,5)P(3)] 3-kinase family of enzymes that catalyze the phosphorylation of inositol 1,4,5-trisphosphate to 1,3,4,5-tetrakisphosphate. The encoded protein is localized to the nucleus and cytoplasm and has both nuclear import and nuclear export activity. Single nucleotide polymorphisms in this gene are associated with Kawasaki disease. |
| Form | 25 mM Tris HCl, pH 7.3, 100 mM glycine, 10% glycerol. |
| Molecular Mass | 75 kDa |
| AA Sequence | <p>MRRCPCRGSLNEAEAGALPAAARMGLEAPRGGRRRQPGQQRPGPAGAPAGRP EGGGPWARTEGSSLHSE PERAGLGPAAGTESPQAEFWTDGQTEPAAAGLVETE RPKQKTEPDRSSLRTHLEWSWSELETTCLWTET GTDGLWTDPHRSDLQFQPEEA SPWTQPGVHGPWTELETHGSQTQPERVKSWADNLWTHQNSSSLQTHPEG ACPS KEPSADGSKELYTDGSRTQQDIEGPWTEPYTDGSQKKQDTEAARKQPGTGGFQI QQDTDGSWTQP STDGSQTAPGTDCLLGEPEPDPLEPEPEGELLTHLYSHLKCSPL CPVPRLIITPETPEPEAQVGPSPSRV EGGSGGFSSASSFDESEDDVVAGGGGASDP EDRSGSKPWKCLKTKVLYKSPFVVSFRKHYPWVQLSGHAGN FQAGEDGRILKRFCQ</p> |

 Tel: 1-631-559-9269 1-516-512-3133

 Email: info@creative-biomart.com  Fax: 1-631-938-8127

 45-1 Ramsey Road, Shirley, NY 11967, USA

CEQRSLEQLMKDPLRPFVPAYYGMVLQDGQTFNQMEDLLADFEGPSIMDCKMGSR
 TYLEEELVKARERPRPRKDMYEKMAVAVDPGAPTPEEHAQGAVTKPRYMQWRETM
 SSTSTLGFRIEGIKKA DGT CNTNFKKTQALEQVTKVLEDFVDGDHVILQKYVACLEEL
 REALEISPFKTHEVVGSSLLFVHDHTG LAKVWMIDFGKTVALPDHQTLSHRLPWAE
 GNREDGYLWGLDNMICLLQGLAQS TRTRPLEQKLISEEDLAANDILDYKDDDDKV

Purity > 80% as determined by SDS-PAGE and Coomassie blue staining.

Stability Stable for 12 months from the date of receipt of the product under proper storage and handling conditions. Avoid repeated freeze-thaw cycles.

Storage Store at -80 centigrade.

Concentration >50 ug/mL as determined by microplate BCA method.

Preparation Recombinant protein was captured through anti-DDK affinity column followed by conventional chromatography steps.

Protein Families Druggable Genome

Full Length Full L.

GENE INFORMATION

Gene Name ITPKC inositol-trisphosphate 3-kinase C [Homo sapiens (human)]

Official Symbol ITPKC

Synonyms IP3KC; IP3-3KC

Gene ID 80271

 Tel: 1-631-559-9269 1-516-512-3133

 Email: info@creative-biomart.com  Fax: 1-631-938-8127

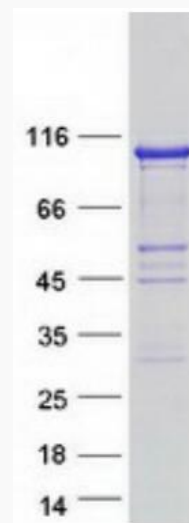
 45-1 Ramsey Road, Shirley, NY 11967, USA

mRNA Refseq [NM_025194.3](#)

Protein Refseq [NP_079470.1](#)

MIM [606476](#)

UniProt ID [Q96DU7](#)



Coomassie blue staining of purified ITPKC protein.

 Tel: 1-631-559-9269 1-516-512-3133

 Email: info@creative-biomart.com  Fax: 1-631-938-8127

 45-1 Ramsey Road, Shirley, NY 11967, USA