

Recombinant Human ITPKC Protein, GST-tagged

Cat. No. ITPKC-4947H Lot. No. (See product label)

SPECIFICATION

Product Overview	Human ITPKC full-length ORF (NP_079470.1, 1 a.a. - 683 a.a.) recombinant protein with GST-tag at N-terminal.
Species	Human
Source	Wheat Germ
Description	This gene encodes a member of the inositol 1,4,5-trisphosphate [Ins(1,4,5)P(3)] 3-kinase family of enzymes that catalyze the phosphorylation of inositol 1,4,5-trisphosphate to 1,3,4,5-tetrakisphosphate. The encoded protein is localized to the nucleus and cytoplasm and has both nuclear import and nuclear export activity. Single nucleotide polymorphisms in this gene are associated with Kawasaki disease
Molecular Mass	101.6 kDa
AA Sequence	MRRCPCRGSLNEAEAGALPAAARMGLEAPRGRRRQPGQQRP GPGAGAPAGRP EGGGPWARTEGSSLHSEPERAGLG PAPGTESPQAEFWTDGQTEPAAAGLGVETE RPKQKTEPDRSSLRTHLEWSWSELETTCLWTETGTDGLWTDPHRSDLQFQPEEAS PWTQPGVHGPWTELETHGSQTQPERVKS WADNLWTHQNSSLQTHPEGACPSKE PSADGSWKELYTDGSRTQQDIEGPWTEPYTDGSQKKQDTEAARKQPGTGGFQIQQ DTDGSWTQPSTDGSQTAPGTDCLLGEPEDGPLEEPEPGELLTHLYSHLKCSPLCPV PRLIITPETPEPEAQVGPVPPSRVEGGSGGFSSASSFDESEDDV VAGGGGASDPEDR SGSKPWKKLKTVLKYSPFVVSFRKHYPWVQLSGHAGNFQAGEDGRILKRFCQCEQ RSLEQLMKDPLRPFVPAYYGMVLQDGQTFNQMEDLLADFEGPSIMDCKMGSRTYL

 Tel: 1-631-559-9269 1-516-512-3133

 Email: info@creative-biomart.com  Fax: 1-631-938-8127

 45-1 Ramsey Road, Shirley, NY 11967, USA

EEELVKARERPRPRKDMYEKMAVDPGAPTPEEHAQGAVTKPRYMQWRETMSSSTLGFRIEGIKKADGTCNTNFKKTQALEQVTKVLEDFVDGDHVLQKYVACLEELREALEISPFKTHEVVGSSLLFVHDHTGLAKVWMIDFGKTVALPDHQTLSHRLPWAEGNR
EDGYLWGLDNMICLLQGLAQS

Applications	Enzyme-linked Immunoabsorbent Assay Western Blot (Recombinant protein) Antibody Production Protein Array
Notes	Best use within three months from the date of receipt of this protein.
Storage	Store at -80 centigrade. Aliquot to avoid repeated freezing and thawing.
Storage Buffer	50 mM Tris-HCl, 10 mM reduced Glutathione, pH=8.0 in the elution buffer.

GENE INFORMATION

Gene Name	ITPKC inositol-trisphosphate 3-kinase C [Homo sapiens]
Official Symbol	ITPKC
Synonyms	ITPKC; inositol-trisphosphate 3-kinase C; inositol 1,4,5 trisphosphate 3 kinase C; IP3 3KC; IP3KC; IP3K C; IP3 3-kinase C; InsP 3 kinase C; insP 3-kinase C; inositol 1,4,5-trisphosphate 3-kinase C; IP3-3KC;
Gene ID	80271
mRNA Refseq	NM_025194
Protein Refseq	NP_079470

 Tel: 1-631-559-9269 1-516-512-3133

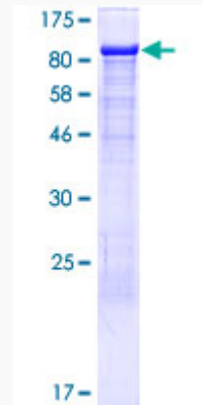
 Email: info@creative-biomart.com  Fax: 1-631-938-8127

 45-1 Ramsey Road, Shirley, NY 11967, USA

MIM 606476

UniProt ID Q96DU7

**Quality Control
Testing**



12.5% SDS-PAGE Stained with Coomassie Blue

 Tel: 1-631-559-9269 1-516-512-3133

 Email: info@creative-biomart.com  Fax: 1-631-938-8127

 45-1 Ramsey Road, Shirley, NY 11967, USA