

Recombinant Human ITPR1 Protein, His-tagged

Cat. No. ITPR1-2346H Lot. No. (See product label)

SPECIFICATION

Product Overview	Recombinant Human ITPR1 Protein (Gly112-Val287) with a N-His tag was expressed in E. coli.
Species	Human
Source	E.coli
ProteinLength	Gly112-Val287
Description	This gene encodes an intracellular receptor for inositol 1,4,5-trisphosphate. Upon stimulation by inositol 1,4,5-trisphosphate, this receptor mediates calcium release from the endoplasmic reticulum. Mutations in this gene cause spinocerebellar ataxia type 15, a disease associated with an heterogeneous group of cerebellar disorders. Multiple transcript variants have been identified for this gene.
Form	Freeze-dried powder
Molecular Mass	Predicted Molecular Mass: 23.5 kDa Accurate Molecular Mass: 27 kDa
Endotoxin	<1.0 EU per 1g (determined by the LAL method).
Purity	> 90%
Applications	Positive Control; Immunogen; SDS-PAGE; WB.

 Tel: 1-631-559-9269 1-516-512-3133

 Email: info@creative-biomart.com  Fax: 1-631-938-8127

 45-1 Ramsey Road, Shirley, NY 11967, USA

Stability	The thermal stability is described by the loss rate. The loss rate was determined by accelerated thermal degradation test, that is, incubate the protein at 37 centigrade for 48h, and no obvious degradation and precipitation were observed. The loss rate is less than 5% within the expiration date under appropriate storage condition.
Storage	Avoid repeated freeze/thaw cycles. Store at 2-8 centigrade for one month. Aliquot and store at -80 centigrade for 12 months.
Storage Buffer	PBS, pH7.4, containing 0.01% SKL, 1mM DTT, 5% Trehalose and Proclin300.
Reconstitution	Reconstitute in 20mM Tris, 150mM NaCl (pH8.0) to a concentration of 0.1-1.0 mg/mL. Do not vortex.

GENE INFORMATION

Gene Name	ITPR1 inositol 1,4,5-trisphosphate receptor, type 1 [Homo sapiens (human)]
Official Symbol	ITPR1
Synonyms	ITPR1; inositol 1,4,5-trisphosphate receptor, type 1; SCA15, SCA16, spinocerebellar ataxia 15, spinocerebellar ataxia 16; inositol 1,4,5-trisphosphate receptor type 1; Insp3r1; IP3R1; IP3R 1; IP3 receptor; type 1 InsP3 receptor; inositol 1,4,5-triphosphate receptor, type 1; type 1 inositol 1,4,5-trisphosphate receptor; IP3R; SCA15; SCA16; INSP3R1; DKFZp313E1334; DKFZp313N1434;
Gene ID	3708
mRNA Refseq	NM_001099952
Protein Refseq	NP_001093422

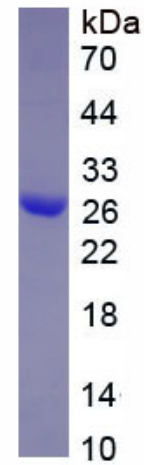
 Tel: 1-631-559-9269 1-516-512-3133

 Email: info@creative-biomart.com  Fax: 1-631-938-8127

 45-1 Ramsey Road, Shirley, NY 11967, USA

MIM 147265

UniProt ID Q14643



Tel: 1-631-559-9269 1-516-512-3133

Email: info@creative-biomart.com Fax: 1-631-938-8127

45-1 Ramsey Road, Shirley, NY 11967, USA