

Recombinant Human ITPR1 Protein, GST-tagged

Cat. No. ITPR1-4945H Lot. No. (See product label)

SPECIFICATION

Product Overview	Human ITPR1 partial ORF (NP_002213, 2470 a.a. - 2577 a.a.) recombinant protein with GST-tag at N-terminal.
Species	Human
Source	Wheat Germ
Description	This gene encodes an intracellular receptor for inositol 1,4,5-trisphosphate. Upon stimulation by inositol 1,4,5-trisphosphate, this receptor mediates calcium release from the endoplasmic reticulum. Mutations in this gene cause spinocerebellar ataxia type 15, a disease associated with an heterogeneous group of cerebellar disorders. Multiple transcript variants have been identified for this gene. [provided by RefSeq, Nov 2009]
Molecular Mass	37.62 kDa
AA Sequence	EHTCETLLMCIVTVLSHGLRSGGGVGDVLRKPSKEEPPLFAARVIYDLLFFFMVIIIVLNL IFGVIIDTFADLRSEKQKKEEILKTTFCIGLERDKFDNKTVTFFEEHI
Applications	Enzyme-linked Immunoabsorbent Assay Western Blot (Recombinant protein) Antibody Production Protein Array
Notes	Best use within three months from the date of receipt of this protein.

 Tel: 1-631-559-9269 1-516-512-3133

 Email: info@creative-biomart.com  Fax: 1-631-938-8127

 45-1 Ramsey Road, Shirley, NY 11967, USA

Storage Store at -80 centigrade. Aliquot to avoid repeated freezing and thawing.

Storage Buffer 50 mM Tris-HCl, 10 mM reduced Glutathione, pH=8.0 in the elution buffer.

GENE INFORMATION

Gene Name [ITPR1 inositol 1,4,5-trisphosphate receptor, type 1 \[Homo sapiens \]](#)

Official Symbol [ITPR1](#)

Synonyms ITPR1; inositol 1,4,5-trisphosphate receptor, type 1; SCA15, SCA16, spinocerebellar ataxia 15 , spinocerebellar ataxia 16; inositol 1,4,5-trisphosphate receptor type 1; Insp3r1; IP3R1; IP3R 1; IP3 receptor; type 1 InsP3 receptor; inositol 1,4,5-trisphosphate receptor, type 1; type 1 inositol 1,4,5-trisphosphate receptor; IP3R; SCA15; SCA16; INSP3R1; DKFZp313E1334; DKFZp313N1434;

Gene ID [3708](#)

mRNA Refseq [NM_001099952](#)

Protein Refseq [NP_001093422](#)

MIM [147265](#)

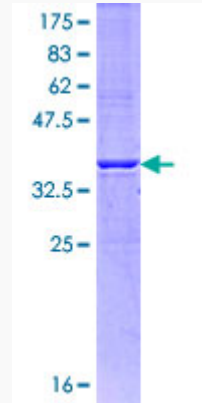
UniProt ID [Q14643](#)

 Tel: 1-631-559-9269 1-516-512-3133

 Email: info@creative-biomart.com  Fax: 1-631-938-8127

 45-1 Ramsey Road, Shirley, NY 11967, USA

**Quality Control
Testing**



12.5% SDS-PAGE Stained with Coomassie Blue

 Tel: 1-631-559-9269 1-516-512-3133

 Email: info@creative-biomart.com  Fax: 1-631-938-8127

 45-1 Ramsey Road, Shirley, NY 11967, USA