

## Recombinant Human IVD Protein, GST-tagged

Cat. No. IVD-4942H Lot. No. (See product label)

### SPECIFICATION

<b>Product Overview</b>	Human IVD full-length ORF ( AAH17202, 1 a.a. - 423 a.a.) recombinant protein with GST-tag at N-terminal.
<b>Species</b>	Human
<b>Source</b>	Wheat Germ
<b>Description</b>	Isovaleryl-CoA dehydrogenase (IVD) is a mitochondrial matrix enzyme that catalyzes the third step in leucine catabolism. The genetic deficiency of IVD results in an accumulation of isovaleric acid, which is toxic to the central nervous system and leads to isovaleric acidemia. Alternatively spliced transcript variants encoding different isoforms have been found for this gene. [provided by RefSeq]
<b>Molecular Mass</b>	72.27 kDa
<b>AA Sequence</b>	MATATRLLGCRVASWRLRPPLAGFVSQRAHSLLPVDDAINGLSEEQRQLRQTMAKF LQEHLPKAQEIDRSNEFKNLREFWKQLGNLGVLGITAPVQYGGSGGLGYLEHVLVM EEISRASGAVGLSYGAHSNLCINQLVRNGNEAQKEKYLPKLISGEYIGALAMSEPNA GSDVSMKLLKAEKKNHYILNGNKFWITNGPDADVLIYAKTDLAAVPASRGITAFIV EKGMPGFSTSKKLDKLGMRGSNTCELIFEDCKIPAANILGHENKGVYVLMGLDLER LVLAGGPLGLMQAVLDHTIPYLVHREAFGQKIGHFQLMQGKMADMYTRLMACRQYV YNVAKACDEGHCTAKDCAGVILYSAECATQVALDGIQCFGGNGYINDFPMGRFLRD AKLYEIGAGTSEVRRLVIGRAFADFH
<b>Applications</b>	Enzyme-linked Immunoabsorbent Assay

 Tel: 1-631-559-9269 1-516-512-3133

 Email: [info@creative-biomart.com](mailto:info@creative-biomart.com)  Fax: 1-631-938-8127

 45-1 Ramsey Road, Shirley, NY 11967, USA

	Western Blot (Recombinant protein) Antibody Production Protein Array
<b>Notes</b>	Best use within three months from the date of receipt of this protein.
<b>Storage</b>	Store at -80 centigrade. Aliquot to avoid repeated freezing and thawing.
<b>Storage Buffer</b>	50 mM Tris-HCl, 10 mM reduced Glutathione, pH=8.0 in the elution buffer.

## GENE INFORMATION

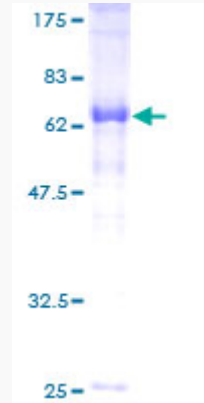
<b>Gene Name</b>	<a href="#">IVD isovaleryl-CoA dehydrogenase [ Homo sapiens ]</a>
<b>Official Symbol</b>	<a href="#">IVD</a>
<b>Synonyms</b>	IVD; isovaleryl-CoA dehydrogenase; isovaleryl CoA dehydrogenase , isovaleryl Coenzyme A dehydrogenase; isovaleryl-CoA dehydrogenase, mitochondrial; ACAD2; isovaleryl CoA dehydrogenase; isovaleryl Coenzyme A dehydrogenase; FLJ12715; FLJ34849;
<b>Gene ID</b>	<a href="#">3712</a>
<b>mRNA Refseq</b>	<a href="#">NM_001159508</a>
<b>Protein Refseq</b>	<a href="#">NP_001152980</a>
<b>MIM</b>	<a href="#">607036</a>
<b>UniProt ID</b>	<a href="#">P26440</a>

 Tel: 1-631-559-9269 1-516-512-3133

 Email: [info@creative-biomart.com](mailto:info@creative-biomart.com)  Fax: 1-631-938-8127

 45-1 Ramsey Road, Shirley, NY 11967, USA

**Quality Control  
Testing**



12.5% SDS-PAGE Stained with Coomassie Blue

 Tel: 1-631-559-9269 1-516-512-3133

 Email: [info@creative-biomart.com](mailto:info@creative-biomart.com)  Fax: 1-631-938-8127

 45-1 Ramsey Road, Shirley, NY 11967, USA