

## Recombinant Human IZUMO4 Protein (His16-His214), C-Fc tagged

Cat. No. IZUMO4-2652H Lot. No. (See product label)

### SPECIFICATION

<b>Product Overview</b>	Recombinant human IZUMO4 (His16-His214) protein fused with the C-terminal Fc tag was expressed in Mammalian cells.
<b>Species</b>	Human
<b>Source</b>	Mammalian Cells
<b>ProteinLength</b>	His16-His214
<b>Description</b>	Located in nucleus.
<b>Molecular Mass</b>	46.89 kDa
<b>Purity</b>	>90 % as determined by SDS-PAGE.
<b>Notes</b>	For research use only.
<b>Storage</b>	Use a manual defrost freezer and avoid repeated freeze thaw cycles. Store at 2 to 8 centigrade for one week. Store at -20 to -80 centigrade for twelve months from the date of receipt.
<b>Storage Buffer</b>	Supplied as solution form in PBS or lyophilized from PBS.
<b>Reconstitution</b>	Reconstitute in sterile water for a stock solution.

 Tel: 1-631-559-9269 1-516-512-3133

 Email: [info@creative-biomart.com](mailto:info@creative-biomart.com)  Fax: 1-631-938-8127

 45-1 Ramsey Road, Shirley, NY 11967, USA

**Shipping**

In general, proteins are provided as lyophilized powder/frozen liquid. They are shipped out with dry ice/blue ice unless customers require otherwise.

**GENE INFORMATION**

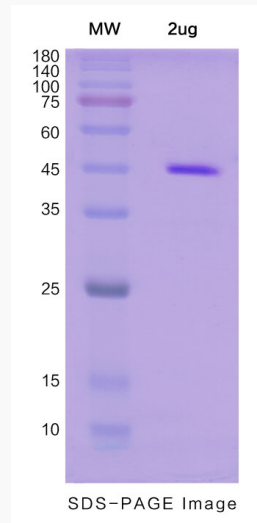
<b>Gene Name</b>	IZUMO4 IZUMO family member 4 [ Homo sapiens (human) ]
<b>Official Symbol</b>	IZUMO4
<b>Synonyms</b>	IZUMO4; IZUMO family member 4; C19orf36; IMAGE:4215339; izumo sperm-egg fusion protein 4; sperm 22 kDa protein c113
<b>Gene ID</b>	113177
<b>mRNA Refseq</b>	NM_001031735
<b>Protein Refseq</b>	NP_001026905
<b>MIM</b>	618897
<b>UniProt ID</b>	Q1ZYL8

 Tel: 1-631-559-9269 1-516-512-3133

 Email: [info@creative-biomart.com](mailto:info@creative-biomart.com)  Fax: 1-631-938-8127

 45-1 Ramsey Road, Shirley, NY 11967, USA

**SDS-PAGE**



 Tel: 1-631-559-9269 1-516-512-3133

 Email: [info@creative-biomart.com](mailto:info@creative-biomart.com)  Fax: 1-631-938-8127

 45-1 Ramsey Road, Shirley, NY 11967, USA