

## Recombinant Mouse Ica1 protein, His-tagged

**Cat. No.** Ica1-26M    **Lot. No.** (See product label)

### SPECIFICATION

<b>Product Overview</b>	Recombinant Mouse Ica1(Met1~Gly257) fused with His tag at N-terminal was expressed in E. coli.
<b>Species</b>	Mouse
<b>Source</b>	E.coli
<b>ProteinLength</b>	Met1~Gly257
<b>Description</b>	Ica1 antigen played an important role in many functions.
<b>Form</b>	PBS, pH7.4, containing 0.01% SKL, 1mM DTT, 5% Trehalose and Proclin300
<b>Molecular Mass</b>	35.9kDa
<b>Endotoxin</b>	Less than 1.0 EU per µg by the LAL method.
<b>Purity</b>	> 95%
<b>Applications</b>	SDS-PAGE; WB; ELISA; IP
<b>Quality Control Test</b>	Has a calculated MW of 40.4 kDa. As a result of glycosylation, The protein migrates as 48-58 kDa under reducing (R) condition and 85-110 kDa and 160-220 kDa under non-reducing (NR) condition on SDS-PAGE gel.

 Tel: 1-631-559-9269    1-516-512-3133

 Email: [info@creative-biomart.com](mailto:info@creative-biomart.com)     Fax: 1-631-938-8127

 45-1 Ramsey Road, Shirley, NY 11967, USA

<b>Stability</b>	The thermal stability is described by the loss rate. The loss rate was determined by accelerated thermal degradation test, that is, incubate the protein at 37 centigrade for 48h, and no obvious degradation and precipitation were observed. The loss rate is less than 5% within the expiration date under appropriate storage condition.
<b>Storage</b>	Avoid repeated freeze/thaw cycles. Store at 2-8 centigrade for one month. Aliquot and store at -80 centigrade for 12 months.
<b>Reconstitution</b>	Reconstitute in PBS or others.

## GENE INFORMATION

<b>Gene Name</b>	<a href="#">Ica1 islet cell autoantigen 1 [ Mus musculus ]</a>
<b>Official Symbol</b>	<a href="#">Ica1</a>
<b>Synonyms</b>	ICA1; islet cell autoantigen 1; p69; ICAp69; islet cell autoantigen p69; 69 kDa islet cell autoantigen; islet cell autoantigen 1, 69 kDa; 69kDa; ICA69;
<b>Gene ID</b>	<a href="#">15893</a>
<b>mRNA Refseq</b>	<a href="#">NM_001252266</a>
<b>Protein Refseq</b>	<a href="#">NP_001239195</a>
<b>UniProt ID</b>	<a href="#">P97411</a>
<b>Chromosome Location</b>	6 A1; 6 4.38 Cm
<b>Pathway</b>	Type I diabetes mellitus, organism-specific biosystem; Type I diabetes mellitus,

 Tel: 1-631-559-9269 1-516-512-3133

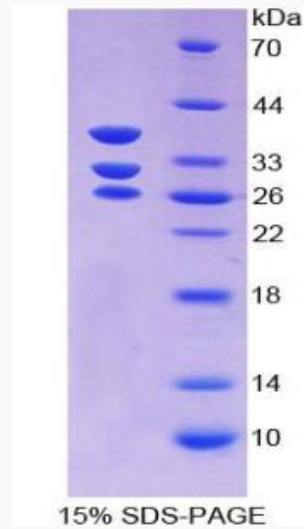
 Email: [info@creative-biomart.com](mailto:info@creative-biomart.com)  Fax: 1-631-938-8127

 45-1 Ramsey Road, Shirley, NY 11967, USA

conserved biosystem;

**Function**

protein domain specific binding;



 Tel: 1-631-559-9269 1-516-512-3133

 Email: [info@creative-biomart.com](mailto:info@creative-biomart.com)  Fax: 1-631-938-8127

 45-1 Ramsey Road, Shirley, NY 11967, USA