

## Recombinant Mouse Icam1 protein, His-tagged

Cat. No. Icam1-2778M Lot. No. (See product label)

### SPECIFICATION

<b>Product Overview</b>	Recombinant Mouse Icam1 aa. (Val46~Leu301 (Accession # P13597)) fused with N-terminal His tag was produced in E. coli cells.
<b>Species</b>	Mouse
<b>Source</b>	E.coli
<b>ProteinLength</b>	Val46~Leu301
<b>Description</b>	This gene encodes an integral membrane protein that binds leukocyte adhesion protein LFA-1. It participates in the innate immune response.
<b>Form</b>	Freeze-dried powder
<b>Molecular Mass</b>	36kDa as determined by SDS-PAGE reducing conditions.
<b>Endotoxin</b>	<1.0EU per 1g (determined by the LAL method)
<b>Purity</b>	>95%
<b>Characteristic</b>	The isoelectric point is 4.8.
<b>Applications</b>	SDS-PAGE; WB; ELISA; IP.
<b>Stability</b>	The thermal stability is described by the loss rate. The loss rate was determined by

 Tel: 1-631-559-9269 1-516-512-3133

 Email: [info@creative-biomart.com](mailto:info@creative-biomart.com)  Fax: 1-631-938-8127

 45-1 Ramsey Road, Shirley, NY 11967, USA

accelerated thermal degradation test, that is, incubate the protein at 37°C for 48h, and no obvious degradation and precipitation were observed. The loss rate is less than 5% within the expiration date under appropriate storage condition.

**Storage**

Avoid repeated freeze/thaw cycles. Store at 2-8°C for one month. Aliquot and store at -80°C for 12 months.

**Storage buffer**

Supplied as lyophilized form in 20mM Tris, 150mM NaCl, pH8.0, containing 1mM EDTA, 1mM DTT, 0.01% sarcosyl, 5% trehalose, and preservative.

**Reconstitution**

Reconstitute in sterile ddH<sub>2</sub>O.

## GENE INFORMATION

**Gene Name**

[Icam1 intercellular adhesion molecule 1 \[ Mus musculus \(house mouse\) \]](#)

**Official Symbol**

[Icam1](#)

**Synonyms**

CD54; Ly-47; Icam-1; MALA-2; myD10; intercellular adhesion molecule 1

**Gene ID**

[15894](#)

**mRNA Refseq**

[NM\\_010493.3](#)

**Protein Refseq**

[NP\\_034623.1](#)

**UniProt ID**

[P13597](#)

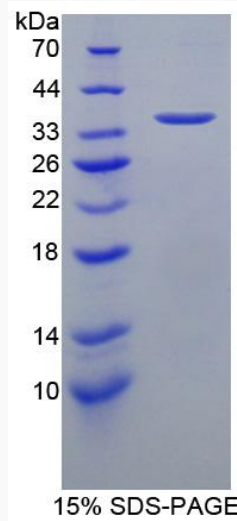
 Tel: 1-631-559-9269 1-516-512-3133

 Email: [info@creative-biomart.com](mailto:info@creative-biomart.com)  Fax: 1-631-938-8127

 45-1 Ramsey Road, Shirley, NY 11967, USA



SDS-PAGE



Tel: 1-631-559-9269 1-516-512-3133

Email: [info@creative-biomart.com](mailto:info@creative-biomart.com) Fax: 1-631-938-8127

45-1 Ramsey Road, Shirley, NY 11967, USA