

Recombinant Mouse Icam1 protein, His-tagged

Cat. No. Icam1-2779M **Lot. No.** (See product label)

SPECIFICATION

Product Overview	Recombinant Mouse Icam1 aa. (Ser328~Ser465 (Accession # P13597)) fused with N-terminal His tag was produced in E. coli cells.
Species	Mouse
Source	E.coli
ProteinLength	Ser328~Ser465
Description	This gene encodes an integral membrane protein that binds leukocyte adhesion protein LFA-1. It participates in the innate immune response.
Form	Freeze-dried powder
Molecular Mass	19kDa as determined by SDS-PAGE reducing conditions.
Endotoxin	<1.0EU per 1g (determined by the LAL method)
Purity	>95%
Characteristic	The isoelectric point is 8.3.
Applications	SDS-PAGE; WB; ELISA; IP.
Stability	The thermal stability is described by the loss rate. The loss rate was determined by

 Tel: 1-631-559-9269 1-516-512-3133

 Email: info@creative-biomart.com  Fax: 1-631-938-8127

 45-1 Ramsey Road, Shirley, NY 11967, USA

accelerated thermal degradation test, that is, incubate the protein at 37°C for 48h, and no obvious degradation and precipitation were observed. The loss rate is less than 5% within the expiration date under appropriate storage condition.

Storage

Avoid repeated freeze/thaw cycles. Store at 2-8°C for one month. Aliquot and store at -80°C for 12 months.

Storage buffer

Supplied as lyophilized form in PBS, pH 7.4, containing 5% sucrose, 0.01% sarcosyl.

Reconstitution

Reconstitute in sterile PBS, pH7.2-pH7.4.

GENE INFORMATION

Gene Name

[Icam1 intercellular adhesion molecule 1 \[Mus musculus \(house mouse\) \]](#)

Official Symbol

[Icam1](#)

Synonyms

CD54; Ly-47; Icam-1; MALA-2; myD10; intercellular adhesion molecule 1

Gene ID

[15894](#)

mRNA Refseq

[NM_010493.3](#)

Protein Refseq

[NP_034623.1](#)

UniProt ID

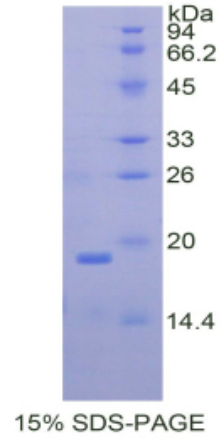
[P13597](#)

 Tel: 1-631-559-9269 1-516-512-3133

 Email: info@creative-biomart.com  Fax: 1-631-938-8127

 45-1 Ramsey Road, Shirley, NY 11967, USA

SDS-PAGE



 Tel: 1-631-559-9269 1-516-512-3133

 Email: info@creative-biomart.com  Fax: 1-631-938-8127

 45-1 Ramsey Road, Shirley, NY 11967, USA